

Product datasheet for **AP51352PU-N**

EAN57 (TEX33) (N-term) Rabbit Polyclonal Antibody

Product data:

Product Type:	Primary Antibodies
Applications:	WB
Recommended Dilution:	ELISA: 1/1000. Western Blot: 1/100-1/500.
Reactivity:	Human
Host:	Rabbit
Isotype:	Ig
Clonality:	Polyclonal
Immunogen:	KLH conjugated synthetic peptide between 1-30 amino acids from the N-terminal region of Human EAN57
Specificity:	This antibody recognizes Human EAN57 / C22orf33 (N-term).
Formulation:	PBS containing 0.09% (W/V) Sodium Azide as preservative State: Aff - Purified State: Liquid purified Ig fraction
Concentration:	lot specific
Purification:	Affinity Chromatography on Protein A
Conjugation:	Unconjugated
Storage:	Store undiluted at 2-8°C for one month or (in aliquots) at -20°C for longer. Avoid repeated freezing and thawing.
Stability:	Shelf life: one year from despatch.
Gene Name:	testis expressed 33
Database Link:	Entrez Gene 339669 Human O43247



[View online »](#)

Background:

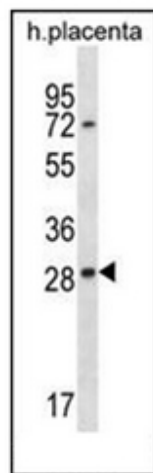
EAN57 is a 59 amino acid protein encoded by the C22orf33 protein. Chromosome 22 contains over 500 genes and about 49 million bases. Being the second smallest human chromosome, 22 contains a surprising variety of interesting genes. Phelan-McDermid syndrome, Neurofibromatosis type 2 and autism are associated with chromosome 22. A schizophrenia susceptibility locus has been identified on chromosome 22 and studies show that 22q11 deletion symptoms include a high incidence of schizophrenia. Translocations between chromosomes 9 and 22 may lead to the formation of the Philadelphia Chromosome and the subsequent production of the novel fusion protein, BCR-Abl, a potent cell proliferation activator found in several types of leukemia.

Synonyms:

C22orf33; cE81G9.2; EAN57

Note:

Molecular Weight: 30725 Da

Product images:


Western blot analysis of EAN57 / C22orf33 Antibody (N-term) in human placenta tissue lysates (35ug/lane). This demonstrates the EAN57 antibody detected the EAN57 protein (arrow).