

## Product datasheet for **AP51351PU-N**

### E2F7 (Center) Rabbit Polyclonal Antibody

#### Product data:

Product Type:	Primary Antibodies
Applications:	WB
Recommended Dilution:	<b>ELISA:</b> 1/1000. <b>Western Blot:</b> 1/100-1/500.
Reactivity:	Human
Host:	Rabbit
Isotype:	Ig
Clonality:	Polyclonal
Immunogen:	KLH conjugated synthetic peptide between 590-619 amino acids from the Central region of Human E2F7
Specificity:	This antibody recognizes Human E2F7 (Center).
Formulation:	PBS containing 0.09% (W/V) Sodium Azide as preservative State: Aff - Purified State: Liquid purified Ig fraction
Concentration:	lot specific
Purification:	Affinity Chromatography on Protein A
Conjugation:	Unconjugated
Storage:	Store undiluted at 2-8°C for one month or (in aliquots) at -20°C for longer. Avoid repeated freezing and thawing.
Stability:	Shelf life: one year from despatch.
Gene Name:	E2F transcription factor 7
Database Link:	<a href="#">Entrez Gene 144455 Human Q96AV8</a>
Background:	Along with E2F8, inhibitor of E2F-dependent transcription that is important for the control of the E2F1-TP53 apoptotic pathway. Directly represses E2F1 transcription (By similarity). Binds DNA independently of DP proteins through the E2 recognition site, 5'-TTTC[CG]CGC-3'. Appears to regulate a subset of E2F-dependent genes whose products are required for normal cell cycle progression.



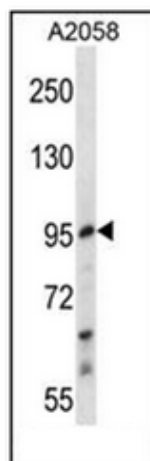
[View online »](#)

Synonyms: E2F-7, FLJ12981

Note: **Molecular Weight:** 99888 Da

Protein Families: Transcription Factors

### Product images:



Western blot analysis of E2F7 Antibody in A2058 cell line lysates (35ug/lane). This demonstrates the E2F7 antibody detected the E2F7 protein (arrow).