

## Product datasheet for **AP51349PU-N**

### **DYRK1B (Center) Rabbit Polyclonal Antibody**

#### **Product data:**

Product Type:	Primary Antibodies
Applications:	WB
Recommended Dilution:	<b>ELISA:</b> 1/1000. <b>Western Blot:</b> 1/100-1/500.
Reactivity:	Human
Host:	Rabbit
Isotype:	Ig
Clonality:	Polyclonal
Immunogen:	KLH conjugated synthetic peptide between 376-405 amino acids from the Central region of Human DYRK1B
Specificity:	This antibody recognizes Human DYRK1B (Center).
Formulation:	PBS containing 0.09% (W/V) Sodium Azide as preservative State: Aff - Purified State: Liquid purified Ig fraction
Concentration:	lot specific
Purification:	Affinity Chromatography on Protein A
Conjugation:	Unconjugated
Storage:	Store undiluted at 2-8°C for one month or (in aliquots) at -20°C for longer. Avoid repeated freezing and thawing.
Stability:	Shelf life: one year from despatch.
Gene Name:	dual specificity tyrosine phosphorylation regulated kinase 1B
Database Link:	<a href="#">Entrez Gene 9149 Human Q9Y463</a>
Background:	DYRK1B is a member of the DYRK family of protein kinases. DYRK1B contains a bipartite nuclear localization signal and is found mainly in muscle and testis. The protein is proposed to be involved in the regulation of nuclear functions. Three isoforms of DYRK1B have been identified differing in the presence of two alternatively spliced exons within the catalytic domain. [provided by RefSeq].



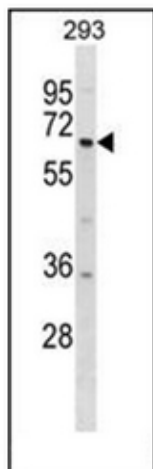
[View online »](#)

**Synonyms:** MIRK, Mirk protein kinase, Minibrain-related kinase

**Note:** **Molecular Weight:** 69198 Da

**Protein Families:** Druggable Genome, Protein Kinase, Transcription Factors

**Product images:**



Western blot analysis of DYRK1B Antibody (Center) in 293 cell line lysates (35ug/lane). This demonstrates the DYRK1B antibody detected the DYRK1B protein (arrow)