

Product datasheet for **AP51348PU-N**

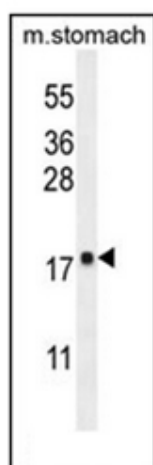
DYNLRB2 (Center) Rabbit Polyclonal Antibody

Product data:

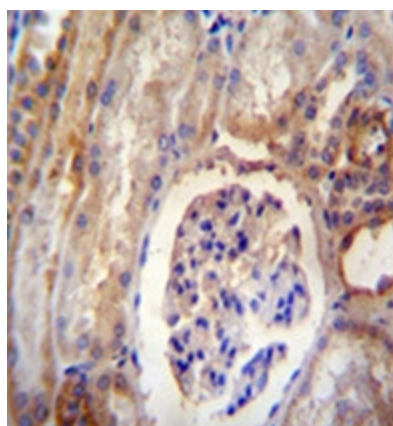
Product Type:	Primary Antibodies
Applications:	IHC, WB
Recommended Dilution:	ELISA: 1/1000. Western Blot: 1/100-1/500. Immunohistochemistry on Paraffin Sections: 1/50-1/100.
Reactivity:	Human, Mouse
Host:	Rabbit
Isotype:	Ig
Clonality:	Polyclonal
Immunogen:	KLH conjugated synthetic peptide between 56-85 amino acids from the Central region of human DYNLRB2
Specificity:	This antibody recognizes Human and Mouse DYNLRB2 (Center).
Formulation:	PBS containing 0.09% (W/V) Sodium Azide as preservative State: Aff - Purified State: Liquid purified Ig fraction
Concentration:	lot specific
Purification:	Affinity Chromatography on Protein A
Conjugation:	Unconjugated
Storage:	Store undiluted at 2-8°C for one month or (in aliquots) at -20°C for longer. Avoid repeated freezing and thawing.
Stability:	Shelf life: one year from despatch.
Gene Name:	dynein light chain roadblock-type 2
Database Link:	Entrez Gene 75465 Mouse Entrez Gene 83657 Human Q8TF09
Synonyms:	Dynein light chain roadblock-type 2, Dynein light chain 2B, DNCL2B, DNLC2B, ROBLD2
Note:	Molecular Weight: 10855 Da



[View online »](#)

Product images:

Western blot analysis of DYNLRB2 Antibody in mouse stomach tissue lysates (35ug/lane).



Formalin fixed, paraffin embedded human kidney tissue reacted with DYNLRB2 Antibody followed by peroxidase conjugation of the secondary antibody and DAB staining.