

## Product datasheet for **AP51345PU-N**

### Dishevelled 2 (DVL2) (C-term) Rabbit Polyclonal Antibody

#### Product data:

Product Type:	Primary Antibodies
Applications:	WB
Recommended Dilution:	<b>ELISA:</b> 1/1000. <b>Western Blot:</b> 1/100-1/500.
Reactivity:	Human
Host:	Rabbit
Isotype:	Ig
Clonality:	Polyclonal
Immunogen:	KLH conjugated synthetic peptide between 587-617 amino acids from the C-terminal region of Human DVL2.
Specificity:	This antibody recognizes Human Dishevelled-2 / DVL2 (C-term).
Formulation:	PBS containing 0.09% (W/V) Sodium Azide as preservative State: Aff - Purified State: Liquid purified Ig fraction
Concentration:	lot specific
Purification:	Affinity Chromatography on Protein A
Conjugation:	Unconjugated
Storage:	Store undiluted at 2-8°C for one month or (in aliquots) at -20°C for longer. Avoid repeated freezing and thawing.
Stability:	Shelf life: one year from despatch.
Gene Name:	dishevelled segment polarity protein 2
Database Link:	<a href="#">Entrez Gene 1856 Human</a> <a href="#">O14641</a>



[View online »](#)

**Background:** This gene encodes a member of the dishevelled (dsh) protein family. The vertebrate dsh proteins have approximately 40% amino acid sequence similarity with *Drosophila* dsh. This gene encodes a 90-kD protein that undergoes posttranslational phosphorylation to form a 95-kD cytoplasmic protein, which may play a role in the signal transduction pathway mediated by multiple Wnt proteins. The mechanisms of dishevelled function in Wnt signaling are likely to be conserved among metazoans.

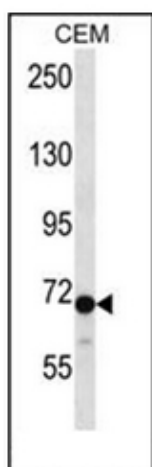
**Synonyms:** DVL-2, DSH homolog 2

**Note:** **Molecular Weight:** 78948 Da

**Protein Families:** Druggable Genome, ES Cell Differentiation/IPS

**Protein Pathways:** Basal cell carcinoma, Colorectal cancer, Melanogenesis, Notch signaling pathway, Pathways in cancer, Wnt signaling pathway

### Product images:



Western blot analysis of Dishevelled-2 / DVL2 Antibody (C-term) in CEM cell line lysates (35ug/lane). This demonstrates the DVL2 antibody detected the DVL2 protein (arrow).