

Product datasheet for **AP51343PU-N**

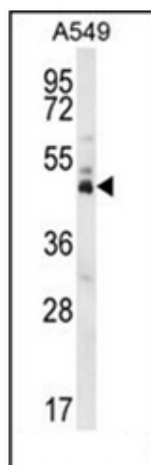
DUX4 (C-term) Rabbit Polyclonal Antibody

Product data:

Product Type:	Primary Antibodies
Applications:	WB
Recommended Dilution:	ELISA: 1/1000. Western Blot: 1/2000.
Reactivity:	Human
Host:	Rabbit
Isotype:	Ig
Clonality:	Polyclonal
Immunogen:	KLH conjugated synthetic peptide between 376-404 amino acids from the C-terminal region of Human DUX4.
Specificity:	This antibody recognizes Human DUX4 (C-term).
Formulation:	PBS containing 0.09% (W/V) Sodium Azide as preservative State: Aff - Purified State: Liquid purified Ig fraction
Concentration:	lot specific
Purification:	Affinity Chromatography on Protein A
Conjugation:	Unconjugated
Storage:	Store undiluted at 2-8°C for one month or (in aliquots) at -20°C for longer. Avoid repeated freezing and thawing.
Stability:	Shelf life: one year from despatch.
Gene Name:	double homeobox 4
Database Link:	Entrez Gene 100288687 Human Q9UBX2
Background:	DUX4 may be involved in transcriptional regulation. Provided below are standard protocols that you may find useful for product applications.
Synonyms:	DUX10
Note:	Molecular Weight: 44940 Da



[View online »](#)

Product images:

Western blot analysis of DUX4 / DUX10 Antibody (C-term) in A549 cell line lysates (35ug/lane). This demonstrates the DUX4 antibody detected the DUX4 protein (arrow).