

Product datasheet for **AP51339PU-N**

DUSP2 (C-term) Rabbit Polyclonal Antibody

Product data:

Product Type:	Primary Antibodies
Applications:	FC, WB
Recommended Dilution:	ELISA: 1/1000. Western Blot: 1/100-1/500. Flow Cytometry: 1/10-1/50.
Reactivity:	Human, Mouse
Host:	Rabbit
Isotype:	Ig
Clonality:	Polyclonal
Immunogen:	KLH conjugated synthetic peptide between 269~298 amino acids from the C-terminal region of Human DUSP2
Specificity:	This antibody recognizes Human and Mouse DUSP2 (C-term).
Formulation:	PBS containing 0.09% (W/V) Sodium Azide as preservative State: Purified State: Liquid purified Ig fraction
Concentration:	lot specific
Purification:	Affinity Chromatography on Protein A
Conjugation:	Unconjugated
Storage:	Store undiluted at 2-8°C for one month or (in aliquots) at -20°C for longer. Avoid repeated freezing and thawing.
Stability:	Shelf life: one year from despatch.
Gene Name:	dual specificity phosphatase 2
Database Link:	Entrez Gene 1844 Human Q05923



[View online »](#)

Background:

DUSP2 is a member of the dual specificity protein phosphatase subfamily. These phosphatases inactivate their target kinases by dephosphorylating both the phosphoserine/threonine and phosphotyrosine residues. They negatively regulate members of the mitogen-activated protein (MAP) kinase superfamily (MAPK/ERK, SAPK/JNK, p38), which are associated with cellular proliferation and differentiation. Different members of the family of dual specificity phosphatases show distinct substrate specificities for various MAP kinases, different tissue distribution and subcellular localization, and different modes of inducibility of their expression by extracellular stimuli.

Synonyms:

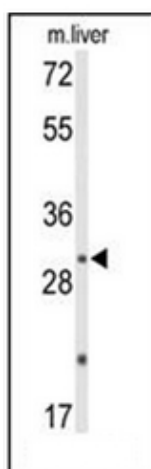
PAC-1

Note:**Molecular Weight:** 34400 Da**Protein Families:**

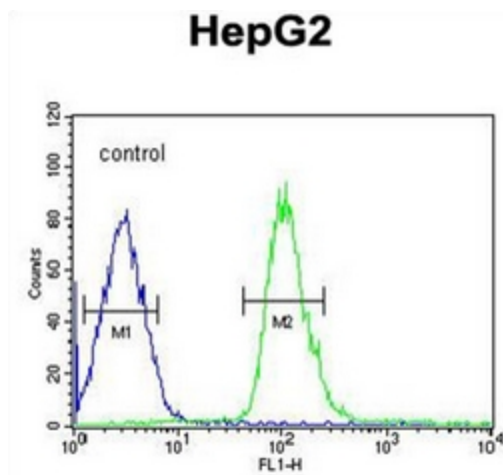
Druggable Genome, Phosphatase

Protein Pathways:

MAPK signaling pathway

Product images:

Western blot analysis of DUSP2 / PAC1 Antibody (C-term) in mouse liver tissue lysates (35ug/lane). DUSP2 (arrow) was detected using the purified Pab.



Flow cytometric analysis of HepG2 cells using DUSP2 / PAC1 Antibody (C-term) (right histogram) compared to a negative control cell (left histogram). FITC-conjugated goat-anti-rabbit secondary antibodies were used for the analysis.