

Product datasheet for **AP51338PU-N**

DUS4L (Center) Rabbit Polyclonal Antibody

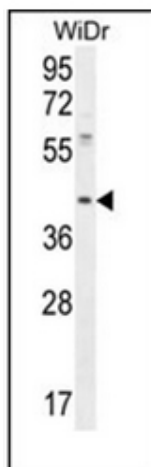
Product data:

Product Type:	Primary Antibodies
Applications:	WB
Recommended Dilution:	ELISA: 1/1000. Western Blot: 1/100-1/500.
Reactivity:	Human, Mouse
Host:	Rabbit
Isotype:	Ig
Clonality:	Polyclonal
Immunogen:	KLH conjugated synthetic peptide between 141-170 amino acids from the Central region of Human DUS4L
Specificity:	This antibody recognizes Human and Mouse (Center).
Formulation:	PBS containing 0.09% (W/V) Sodium Azide as preservative State: Aff - Purified State: Liquid purified Ig fraction
Concentration:	lot specific
Purification:	Affinity Chromatography on Protein A
Conjugation:	Unconjugated
Storage:	Store undiluted at 2-8°C for one month or (in aliquots) at -20°C for longer. Avoid repeated freezing and thawing.
Stability:	Shelf life: one year from despatch.
Gene Name:	dihydrouridine synthase 4 like
Database Link:	Entrez Gene 71916 Mouse Entrez Gene 11062 Human O95620
Background:	Catalyzes the synthesis of dihydrouridine, a modified base found in the D-loop of most tRNAs (By similarity).
Synonyms:	2310069P03Rik; DUS4; MGC133233; PP35
Note:	Molecular Weight: 35816 Da

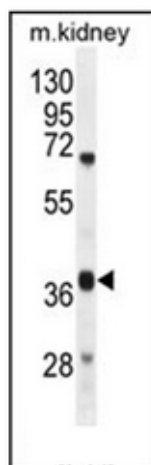


[View online »](#)

Product images:



Western blot analysis of DUS4L Antibody in WiDr cell line lysates (35ug/lane). This demonstrates the DUS4L antibody detected the DUS4L protein (arrow).



Western blot analysis of DUS4L Antibody in mouse kidney tissue lysates (35ug/lane). This demonstrates the DUS4L antibody detected the DUS4L protein (arrow).