

Product datasheet for **AP51337PU-N**

DUS1L (C-term) Rabbit Polyclonal Antibody

Product data:

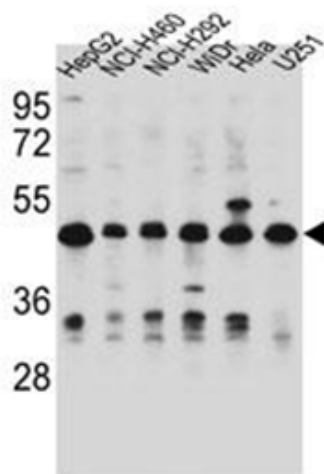
Product Type:	Primary Antibodies
Applications:	IHC, WB
Recommended Dilution:	ELISA: 1/1000. Western Blot: 1/100-1/500. Immunohistochemistry on Paraffin Sections: 1/10-1/50.
Reactivity:	Human
Host:	Rabbit
Isotype:	Ig
Clonality:	Polyclonal
Immunogen:	KLH conjugated synthetic peptide between 320-349 amino acids from the C-terminal region of human DUS1L.
Specificity:	This antibody recognizes Human DUS1L (C-term).
Formulation:	PBS containing 0.09% (W/V) Sodium Azide as preservative State: Aff - Purified State: Liquid purified Ig fraction
Concentration:	lot specific
Purification:	Affinity Chromatography on Protein A
Conjugation:	Unconjugated
Storage:	Store undiluted at 2-8°C for one month or (in aliquots) at -20°C for longer. Avoid repeated freezing and thawing.
Stability:	Shelf life: one year from despatch.
Gene Name:	dihydrouridine synthase 1 like
Database Link:	Entrez Gene 64118 Human Q6P1R4
Background:	DUS1L catalyzes the synthesis of dihydrouridine, a modified base found in the D-loop of most tRNAs (By similarity).
Synonyms:	DUS1; PP3111



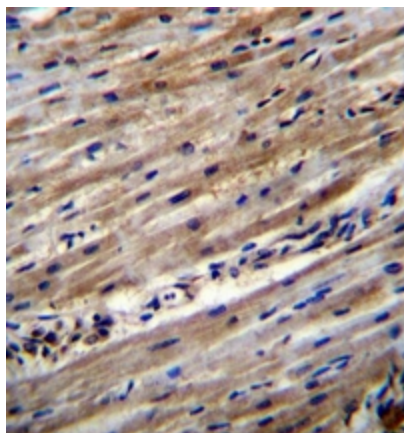
[View online »](#)

Note: **Molecular Weight:** 53230 Da

Product images:



Western blot analysis of DUS1L Antibody (C-term) in HepG2, NCI-H460, NCI-H292, WiDr, HeLa, U251 cell line lysates (35ug/lane). This demonstrates the DUS1L antibody detected the DUS1L protein (arrow).



Formalin fixed and paraffin embedded human heart tissue reacted with DUS1L Antibody (C-term) followed by peroxidase conjugation of the secondary antibody and DAB staining.