

## Product datasheet for **AP51335PU-N**

### **DULLARD (CTDNEP1) (Center) Rabbit Polyclonal Antibody**

#### **Product data:**

Product Type:	Primary Antibodies
Applications:	IHC, WB
Recommended Dilution:	<b>Peptide ELISA:</b> 1/1000. <b>Western Blot:</b> 1/1000. <b>Immunohistochemistry on Paraffin Sections:</b> 1/10-1/50.
Reactivity:	Human
Host:	Rabbit
Isotype:	Ig
Clonality:	Polyclonal
Immunogen:	KLH conjugated synthetic peptide between 131-160 amino acids from the Central region of human DULLARD
Specificity:	This antibody recognizes Human DULLARD (Center).
Formulation:	PBS containing 0.09% (W/V) Sodium Azide as preservative State: Aff - Purified State: Liquid purified Ig fraction
Concentration:	lot specific
Purification:	Affinity Chromatography on Protein A
Conjugation:	Unconjugated
Storage:	Store undiluted at 2-8°C for one month or (in aliquots) at -20°C for longer. Avoid repeated freezing and thawing.
Stability:	Shelf life: one year from despatch.
Gene Name:	CTD nuclear envelope phosphatase 1
Database Link:	<a href="#">Entrez Gene 23399 Human O95476</a>
Background:	Serine/threonine phosphatase which may be required for proper nuclear membrane morphology. Involved in LPIN1 dephosphorylation. May antagonize BMP signaling.
Synonyms:	CTDNEP1

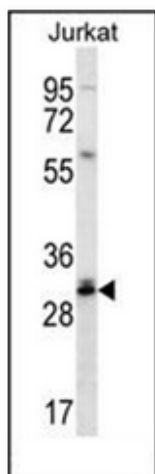


[View online »](#)

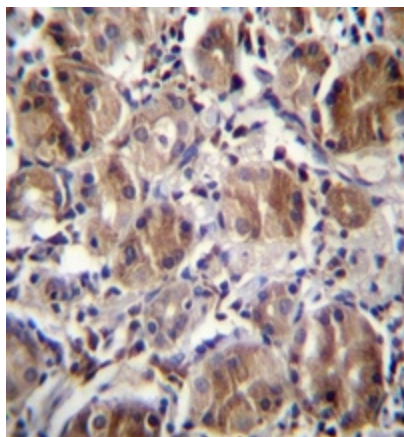
Note: **Molecular Weight:** 28377 Da

Protein Families: Transmembrane

### Product images:



Western blot analysis of DULLARD Antibody in Jurkat cell line lysates (35ug/lane). This demonstrates the DULLARD antibody detected the DULLARD protein (arrow).



Formalin fixed and paraffin embedded human stomach tissue stained with DULLARD Antibody followed by peroxidase conjugation of the secondary antibody and DAB staining.