

## Product datasheet for **AP51334PU-N**

### DTX3L (Center) Rabbit Polyclonal Antibody

#### Product data:

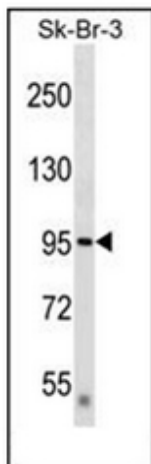
Product Type:	Primary Antibodies
Applications:	WB
Recommended Dilution:	<b>ELISA:</b> 1/1000. <b>Western Blot:</b> 1/100-1/500.
Reactivity:	Human
Host:	Rabbit
Isotype:	Ig
Clonality:	Polyclonal
Immunogen:	KLH conjugated synthetic peptide between 452-482 amino acids from the Central region of human DTX3L
Specificity:	This antibody recognizes Human DTX3L (Center).
Formulation:	PBS containing 0.09% (W/V) Sodium Azide as preservative State: Aff - Purified State: Liquid purified Ig fraction
Concentration:	lot specific
Purification:	Affinity Chromatography on Protein A
Conjugation:	Unconjugated
Storage:	Store undiluted at 2-8°C for one month or (in aliquots) at -20°C for longer. Avoid repeated freezing and thawing.
Stability:	Shelf life: one year from despatch.
Gene Name:	deltex 3 like, E3 ubiquitin ligase
Database Link:	<a href="#">Entrez Gene 151636 Human Q8TDB6</a>
Background:	DTX3L functions as an E3 ubiquitin ligase (Takeyama et al., 2003 [PubMed 12670957]).
Synonyms:	Protein deltex-3-like, Rhysin-2
Note:	<b>Molecular Weight:</b> 83554 Da
Protein Families:	Druggable Genome



[View online »](#)

Protein Pathways: Notch signaling pathway

### Product images:



Western blot analysis of DTX3L / BBAP Antibody in SK-BR-3 cell line lysates (35ug/lane). This demonstrates the DTX3L antibody detected the DTX3L protein (arrow).