

## Product datasheet for **AP51327PU-N**

### Dextrin (DSTN) (Center) Rabbit Polyclonal Antibody

#### Product data:

Product Type:	Primary Antibodies
Applications:	FC, IHC, WB
Recommended Dilution:	<b>ELISA:</b> 1/1000. <b>Western Blot:</b> 1/100-1/500. Flow Cytometry: 1/10-1/50. <b>Immunohistochemistry on Paraffin Sections:</b> 1/50-1/100.
Reactivity:	Human
Host:	Rabbit
Isotype:	Ig
Clonality:	Polyclonal
Immunogen:	KLH conjugated synthetic peptide between 77~106 amino acids from the Center region of Human Dextrin.
Specificity:	This antibody recognizes Human Dextrin (Center).
Formulation:	PBS with 0.09% (W/V) Sodium Azide as preservative State: Aff - Purified State: Liquid purified Ig fraction
Concentration:	lot specific
Purification:	Affinity Chromatography on Protein A
Conjugation:	Unconjugated
Storage:	Store undiluted at 2-8°C for one month or (in aliquots) at -20°C for longer. Avoid repeated freezing and thawing.
Stability:	Shelf life: one year from despatch.
Gene Name:	dextrin, actin depolymerizing factor
Database Link:	<a href="#">Entrez Gene 11034 Human P60981</a>



[View online »](#)

**Background:**

DSTN belongs to the actin-binding proteins ADF family. This family of proteins is responsible for enhancing the turnover rate of actin in vivo. This protein encodes the actin depolymerizing protein that severs actin filaments (F-actin) and binds to actin monomers (G-actin).

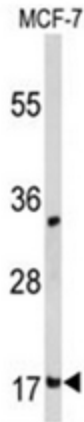
**Synonyms:**

DSTN, ACTDP, DSN, ADF

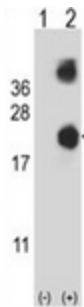
**Note:**

**Molecular Weight:** 18506 Da

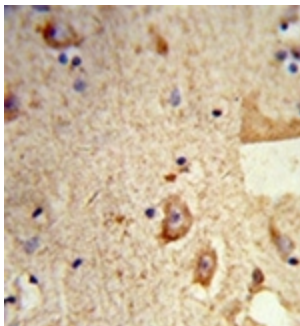
**Product images:**



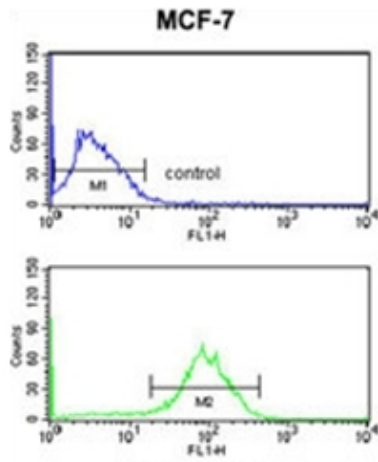
Western blot analysis of Destrin Antibody in MCF-7 cell line lysates (35ug/lane). DSTN (arrow) was detected using the purified Pab.



Western blot analysis of DSTN (arrow) using Destrin Antibody. 293 cell lysates (2 ug/lane) either nontransfected (Lane 1) or transiently transfected (Lane 2) with the DSTN gene.



Formalin-fixed and paraffin-embedded human brain tissue reacted with Destrin Antibody, which was peroxidase-conjugated to the secondary antibody, followed by DAB staining.



Flow cytometry analysis of MCF-7 cells using Dextrin Antibody (bottom histogram) compared to a negative control cell (top histogram). FITC-conjugated goat-anti-rabbit secondary antibodies were used for the analysis.