

Product datasheet for **AP51326PU-N**

DSN1 (C-term) Rabbit Polyclonal Antibody

Product data:

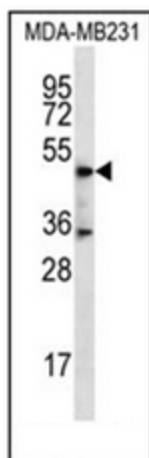
Product Type:	Primary Antibodies
Applications:	WB
Recommended Dilution:	ELISA: 1/1000. Western Blot: 1/100-1/500.
Reactivity:	Human
Host:	Rabbit
Isotype:	Ig
Clonality:	Polyclonal
Immunogen:	KLH conjugated synthetic peptide between 264-295 amino acids from the C-terminal region of Human DSN1
Specificity:	This antibody recognizes Human DSN1 (C-term).
Formulation:	PBS with 0.09% (W/V) Sodium Azide as preservative State: Aff - Purified State: Liquid purified Ig fraction
Concentration:	lot specific
Purification:	Affinity Chromatography on Protein A
Conjugation:	Unconjugated
Storage:	Store undiluted at 2-8°C for one month or (in aliquots) at -20°C for longer. Avoid repeated freezing and thawing.
Stability:	Shelf life: one year from despatch.
Gene Name:	DSN1 homolog, MIS12 kinetochore complex component
Database Link:	Entrez Gene 79980 Human Q9H410
Background:	This gene encodes a kinetochore protein that functions as part of the minichromosome instability-12 centromere complex. The encoded protein is required for proper kinetochore assembly and progression through the cell cycle. Alternative splicing results in multiple transcript variants.
Synonyms:	C20orf172, MIS13



[View online »](#)

Note: **Molecular Weight:** 40067 Da

Product images:



Western blot analysis of DSN1 Antibody (C-term) in MDA-MB231 cell line lysates (35ug/lane). This demonstrates the DSN1 antibody detected the DSN1 protein (arrow).