

Product datasheet for **AP51321PU-N**

DRGX (C-term) Rabbit Polyclonal Antibody

Product data:

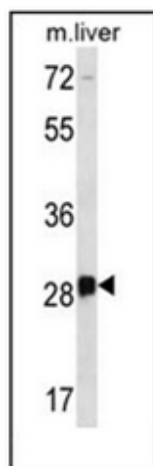
Product Type:	Primary Antibodies
Applications:	WB
Recommended Dilution:	ELISA: 1/1000. Western Blot: 1/100-1/500.
Reactivity:	Human, Mouse
Host:	Rabbit
Isotype:	Ig
Clonality:	Polyclonal
Immunogen:	KLH conjugated synthetic peptide between 233-263 amino acids from the C-terminal region of Human DRGX / PRRXL1.
Specificity:	This antibody recognizes Mouse DRGX / PRRXL1 (C-term).
Formulation:	PBS with 0.09% (W/V) Sodium Azide as preservative State: Aff - Purified State: Liquid purified Ig fraction
Concentration:	lot specific
Purification:	Affinity Chromatography on Protein A
Conjugation:	Unconjugated
Storage:	Store undiluted at 2-8°C for one month or (in aliquots) at -20°C for longer. Avoid repeated freezing and thawing.
Stability:	Shelf life: one year from despatch.
Gene Name:	dorsal root ganglia homeobox
Database Link:	Entrez Gene 644168 Human A6NNA5
Background:	DRGX is a transcription factor required for the formation of correct projections from nociceptive sensory neurons to the dorsal horn of the spinal cord and normal perception of pain (By similarity).
Synonyms:	DRG11; PRRXL1



[View online »](#)

Note: **Molecular Weight:** 28672 Da

Product images:



Western blot analysis of DRGX / PRRXL1 (C-term) Antibody (C-term) in Mouse liver tissue lysates (35ug/lane). This demonstrates the DRGX antibody detected the DRGX protein (arrow).