

## Product datasheet for **AP51320PU-N**

### **DRG1 (C-term) Rabbit Polyclonal Antibody**

#### **Product data:**

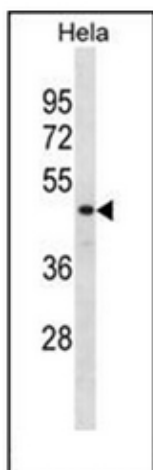
Product Type:	Primary Antibodies
Applications:	IHC, WB
Recommended Dilution:	<b>ELISA:</b> 1/1000. <b>Western Blot:</b> 1/100-1/500. <b>Immunohistochemistry on Paraffin Sections:</b> 1/10-1/50.
Reactivity:	Human
Host:	Rabbit
Isotype:	Ig
Clonality:	Polyclonal
Immunogen:	KLH conjugated synthetic peptide between 333-363 amino acids from the C-terminal region of Human DRG1
Specificity:	This antibody recognizes Human DRG1 / NEDD3 (C-term).
Formulation:	PBS with 0.09% (W/V) Sodium Azide as preservative State: Aff - Purified State: Liquid purified Ig fraction
Concentration:	lot specific
Purification:	Affinity Chromatography on Protein A
Conjugation:	Unconjugated
Storage:	Store undiluted at 2-8°C for one month or (in aliquots) at -20°C for longer. Avoid repeated freezing and thawing.
Stability:	Shelf life: one year from despatch.
Gene Name:	developmentally regulated GTP binding protein 1
Database Link:	<a href="#">Entrez Gene 4733 Human Q9Y295</a>
Background:	DRG1 may play a role in cell proliferation, differentiation and death.
Synonyms:	DRG-1, NEDD-3
Note:	<b>Molecular Weight:</b> 40542 Da



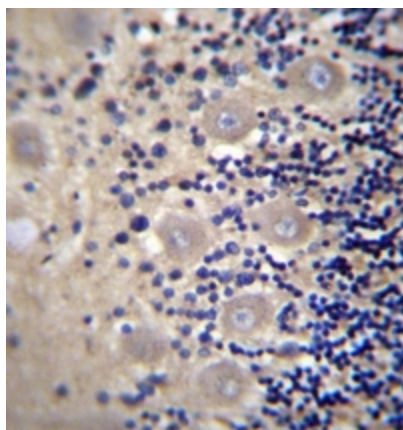
[View online »](#)

Protein Families: Transcription Factors

### Product images:



Western blot analysis of DRG1 / NEDD3 Antibody (C-term) in HeLa cell line lysates (35ug/lane). This demonstrates the DRG1 antibody detected the DRG1 protein (arrow).



Formalin fixed and paraffin embedded human cerebellum tissue reacted with DRG1 / NEDD3 Antibody (C-term) followed by peroxidase conjugation of the secondary antibody and DAB staining.