

Product datasheet for **AP51318PU-N**

Dopamine D2 Receptor (DRD2) (C-term) Rabbit Polyclonal Antibody

Product data:

Product Type:	Primary Antibodies
Applications:	WB
Recommended Dilution:	ELISA: 1/1000. Western Blot: 1/100-1/500.
Reactivity:	Human, Mouse
Host:	Rabbit
Isotype:	Ig
Clonality:	Polyclonal
Immunogen:	KLH conjugated synthetic peptide between 306-336 amino acids from the C-terminal region of Human Dopamine D2 receptor.
Specificity:	This antibody recognizes Human and Mouse Dopamine D2 receptor (C-term).
Formulation:	PBS with 0.09% (W/V) Sodium Azide as preservative State: Aff - Purified State: Liquid purified Ig fraction
Concentration:	lot specific
Purification:	Affinity Chromatography on Protein A
Conjugation:	Unconjugated
Storage:	Store undiluted at 2-8°C for one month or (in aliquots) at -20°C for longer. Avoid repeated freezing and thawing.
Stability:	Shelf life: one year from despatch.
Gene Name:	dopamine receptor D2
Database Link:	Entrez Gene 1813 Human P14416



[View online »](#)

Background: This gene encodes the D2 subtype of the dopamine receptor. This G-protein coupled receptor inhibits adenylyl cyclase activity. A missense mutation in this gene causes myoclonus dystonia; other mutations have been associated with schizophrenia. Alternative splicing of this gene results in two transcript variants encoding different isoforms. A third variant has been described, but it has not been determined whether this form is normal or due to aberrant splicing.

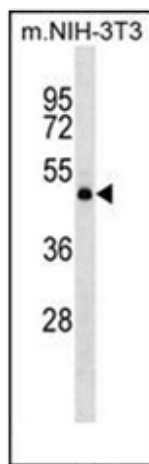
Synonyms: DRD2

Note: **Molecular Weight:** 50619 Da

Protein Families: Druggable Genome, GPCR, Transmembrane

Protein Pathways: Gap junction, Neuroactive ligand-receptor interaction

Product images:



Western blot analysis of Dopamine D2 receptor Antibody (C-term) in mouse NIH-3T3 cell line lysates (35ug/lane). This demonstrates the DRD2 antibody detected the DRD2 protein (arrow).