

Product datasheet for **AP51316PU-N**

DPY19L1 (C-term) Rabbit Polyclonal Antibody

Product data:

Product Type:	Primary Antibodies
Applications:	FC, IHC, WB
Recommended Dilution:	ELISA: 1/1000. Western Blot: 1/100-1/500. Flow Cytometry: 1/10-1/50. Immunohistochemistry on Paraffin Sections: 1/50-1/100.
Reactivity:	Human
Host:	Rabbit
Isotype:	Ig
Clonality:	Polyclonal
Immunogen:	conjugated synthetic peptide between 560-590 amino acids from the C-terminal region of human DPY19L1.
Specificity:	This antibody recognizes Human DPY19L1 (C-term).
Formulation:	PBS with 0.09% (W/V) Sodium Azide as preservative State: Aff - Purified State: Liquid purified Ig fraction
Concentration:	lot specific
Purification:	Affinity Chromatography on Protein A
Conjugation:	Unconjugated
Storage:	Store undiluted at 2-8°C for one month or (in aliquots) at -20°C for longer. Avoid repeated freezing and thawing.
Stability:	Shelf life: one year from despatch.
Gene Name:	dpy-19 like 1 (C. elegans)
Database Link:	Entrez Gene 233333 Human Q2PZ11
Background:	Belongs to the DPY19 family. There are two named isoforms. The specific function of DPY19L1 is not yet known.
Synonyms:	GA0500, KIAA0877, Protein dpy-19 homolog 1

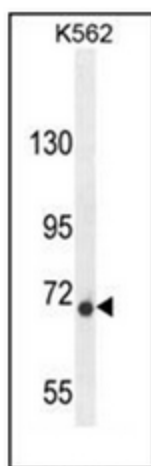


[View online »](#)

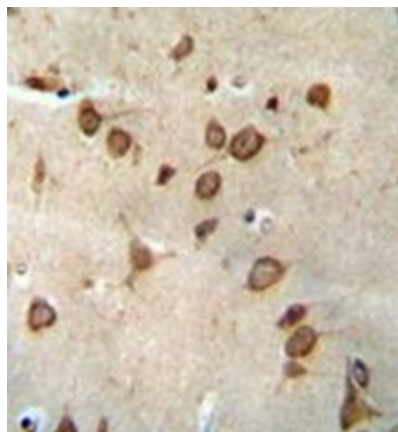
Note: **Molecular Weight:** 77319 Da

Protein Families: Transmembrane

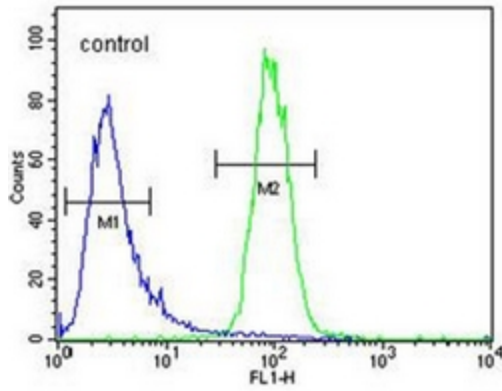
Product images:



Western blot analysis of DPY19L1 Antibody (C-term) in K562 cell line lysates (35ug/lane). This demonstrates the DPY19L1 antibody detected the DPY19L1 protein (arrow).



Formalin fixed and paraffin embedded human brain tissue reacted with DPY19L1 Antibody (C-term) followed by peroxidase conjugation of the secondary antibody and DAB staining.

K562

Flow cytometric analysis of K562 cells using DPY19L1 Antibody (C-term) (right histogram) compared to a negative control cell (left histogram). FITC-conjugated goat-anti-rabbit secondary antibodies were used for the analysis.