

## Product datasheet for **AP51314PU-N**

### DPPA5 (N-term) Rabbit Polyclonal Antibody

#### Product data:

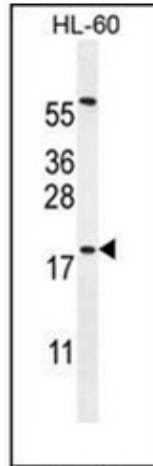
Product Type:	Primary Antibodies
Applications:	FC, WB
Recommended Dilution:	<b>ELISA:</b> 1/1000. <b>Western Blot:</b> 1/100-1/500. <b>Flow Cytometry:</b> 1/10-1/50.
Reactivity:	Human
Host:	Rabbit
Isotype:	Ig
Clonality:	Polyclonal
Immunogen:	KLH conjugated synthetic peptide between 9-39 amino acids from the N-terminal region of Human DPPA5
Specificity:	This antibody recognizes Human DPPA5 (N-term).
Formulation:	PBS with 0.09% (W/V) Sodium Azide as preservative State: Aff - Purified State: Liquid purified Ig fraction
Concentration:	lot specific
Purification:	Affinity Chromatography on Protein A
Conjugation:	Unconjugated
Storage:	Store undiluted at 2-8°C for one month or (in aliquots) at -20°C for longer. Avoid repeated freezing and thawing.
Stability:	Shelf life: one year from despatch.
Gene Name:	developmental pluripotency associated 5
Database Link:	<a href="#">Entrez Gene 340168 Human A6NC42</a>
Background:	Involved in the maintenance of embryonic stem (ES) cell pluripotency. Dispensable for self-renewal of pluripotent ES cells and establishment of germ cells. Associates with specific target mRNAs (By similarity).
Synonyms:	Esg-1; Esg1; hDPPA5



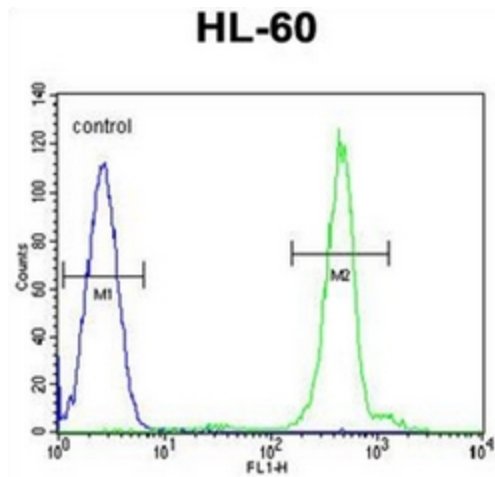
[View online »](#)

Note: **Molecular Weight:** 13498 Da

**Product images:**



Western blot analysis of DPPA5 Antibody (N-term) in HL-60 cell line lysates (35ug/lane). This demonstrates the DPPA5 antibody detected the DPPA5 protein (arrow).



Flow cytometric analysis of HL-60 cells using DPPA5 Antibody (N-term) (right histogram) compared to a negative control cell (left histogram). FITC-conjugated goat-anti-rabbit secondary antibodies were used for the analysis.