

Product datasheet for **AP51310PU-N**

DPEP3 (C-term) Rabbit Polyclonal Antibody

Product data:

Product Type:	Primary Antibodies
Applications:	WB
Recommended Dilution:	Western Blot: 1/1000.
Reactivity:	Human
Host:	Rabbit
Isotype:	Ig
Clonality:	Polyclonal
Immunogen:	KLH conjugated synthetic peptide between 391-420 amino acids from the C-terminal region of Human DPEP3
Specificity:	This antibody recognizes Human DPEP3 (C-term).
Formulation:	PBS with 0.09% (W/V) Sodium Azide as preservative State: Aff - Purified State: Liquid purified Ig fraction
Concentration:	lot specific
Purification:	Affinity Chromatography on Protein A
Conjugation:	Unconjugated
Storage:	Store undiluted at 2-8°C for one month or (in aliquots) at -20°C for longer. Avoid repeated freezing and thawing.
Stability:	Shelf life: one year from despatch.
Gene Name:	dipeptidase 3
Database Link:	Entrez Gene 64180 Human Q9H4B8
Background:	This gene encodes a membrane-bound glycoprotein from the family of dipeptidases involved in hydrolytic metabolism of various dipeptides, including penem and carbapenem beta-lactam antibiotics. This gene is located on chromosome 16 in a cluster with another member of this family. Alternatively spliced transcript variants that encode different isoforms have been found for this gene.
Synonyms:	Dipeptidase 3

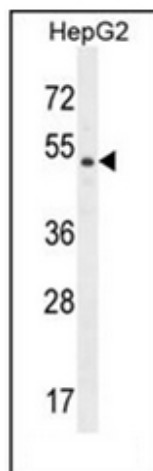


[View online »](#)

Note: **Molecular Weight:** 53687 Da

Protein Families: Druggable Genome, Protease

Product images:



Western blot analysis of DPEP3 Antibody (C-term) in HepG2 cell line lysates (35ug/lane). This demonstrates the DPEP3 antibody detected the DPEP3 protein (arrow).