

Product datasheet for **AP51308PU-N**

DOK5 (PTB Dom.) Rabbit Polyclonal Antibody

Product data:

Product Type:	Primary Antibodies
Applications:	WB
Recommended Dilution:	ELISA: 1/1000. Western Blot: 1/100-1/500.
Reactivity:	Human
Host:	Rabbit
Isotype:	Ig
Clonality:	Polyclonal
Immunogen:	Recombinant protein (GST-tag removed) from Human DOK5
Specificity:	This antibody recognizes Human DOK5 (PTB Domain).
Formulation:	PBS with 0.09% (W/V) Sodium Azide as preservative State: Purified State: Liquid purified Ig fraction
Concentration:	lot specific
Purification:	Saturated Ammonium Sulfate (SAS) precipitation followed by dialysis against PB
Conjugation:	Unconjugated
Storage:	Store undiluted at 2-8°C for one month or (in aliquots) at -20°C for longer. Avoid repeated freezing and thawing.
Stability:	Shelf life: one year from despatch.
Gene Name:	docking protein 5
Database Link:	Entrez Gene 55816 Human Q9P104
Background:	DOK proteins are enzymatically inert adaptor or scaffolding proteins. They provide a docking platform for the assembly of multimolecular signaling complexes. DOK5 functions in RET-mediated neurite outgrowth and plays a positive role in activation of the MAP kinase pathway. Putative link with downstream effectors of RET in neuronal differentiation.
Synonyms:	Docking protein 5, IRS6, C20orf180

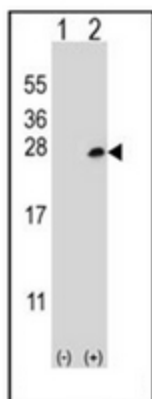


[View online »](#)

Note: **Molecular Weight:** 35464 Da

Protein Families: Druggable Genome

Product images:



Western blot analysis of Dok5 (arrow) using DOK5 Antibody (PTB domain). 293 cell lysates (2 ug/lane) either nontransfected (Lane 1) or transiently transfected (Lane 2) with the Dok5 gene.