

## Product datasheet for **AP51307PU-N**

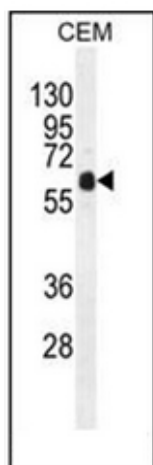
### **DOK3 (C-term) Rabbit Polyclonal Antibody**

#### **Product data:**

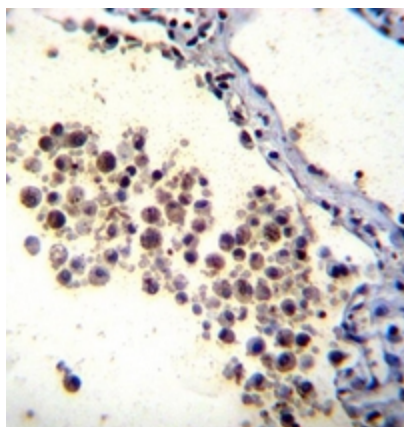
Product Type:	Primary Antibodies
Applications:	IHC, WB
Recommended Dilution:	<b>ELISA:</b> 1/1000. <b>Western Blot:</b> 1/100-1/500. <b>Immunohistochemistry on Paraffin Sections:</b> 1/10-1/50.
Reactivity:	Human
Host:	Rabbit
Isotype:	Ig
Clonality:	Polyclonal
Immunogen:	KLH conjugated synthetic peptide between 300-329 amino acids from the C-terminal region of Human DOK3
Specificity:	This antibody recognizes Human DOK3 (C-term).
Formulation:	PBS with 0.09% (W/V) Sodium Azide as preservative State: Aff - Purified State: Liquid purified Ig fraction
Concentration:	lot specific
Purification:	Affinity Chromatography on Protein A
Conjugation:	Unconjugated
Gene Name:	docking protein 3
Database Link:	<a href="#">Entrez Gene 79930 Human Q7L591</a>
Background:	DOK proteins are enzymatically inert adaptor or scaffolding proteins. They provide a docking platform for the assembly of multimolecular signaling complexes. DOK3 is a negative regulator of JNK signaling in B-cells through interaction with INPP5D/SHIP1. May modulate Abl function (By similarity).
Synonyms:	Docking protein 3
Note:	<b>Molecular Weight:</b> 53288 Da
Protein Families:	Druggable Genome



[View online »](#)

**Product images:**

Western blot analysis of DOK3 Antibody (C-term) in CEM cell line lysates (35ug/lane). This demonstrates the DOK3 antibody detected the DOK3 protein (arrow).



Formalin fixed and paraffin embedded human lung tissue reacted with DOK3 Antibody (C-term) followed by peroxidase conjugation of the secondary antibody and DAB staining.