

Product datasheet for **AP51306PU-N**

DOC2A (Center) Rabbit Polyclonal Antibody

Product data:

Product Type:	Primary Antibodies
Applications:	IHC, WB
Recommended Dilution:	ELISA: 1/1000. Western Blot: 1/100-1/500. Immunohistochemistry on Paraffin Sections: 1/10-1/50.
Reactivity:	Human
Host:	Rabbit
Isotype:	Ig
Clonality:	Polyclonal
Immunogen:	KLH conjugated synthetic peptide between 284-314 amino acids from the Central region of Human DOC2A
Specificity:	This antibody recognizes Human DOC2A (Center).
Formulation:	PBS containing 0.09% (W/V) Sodium Azide as preservative State: Aff - Purified State: Liquid purified Ig fraction
Concentration:	lot specific
Purification:	Protein A column, followed by peptide affinity purification
Conjugation:	Unconjugated
Storage:	Store undiluted at 2-8°C for one month or (in aliquots) at -20°C for longer. Avoid repeated freezing and thawing.
Stability:	Shelf life: one year from despatch.
Gene Name:	double C2 domain alpha
Database Link:	Entrez Gene 8448 Human Q14183



[View online »](#)

Background:

There are at least two protein isoforms of the Double C2 protein, namely alpha (DOC2A) and beta (DOC2B), which contain two C2-like domains. DOC2A and DOC2B are encoded by different genes; these genes are at times confused with the unrelated DAB2 gene which was initially named DOC-2. DOC2A is mainly expressed in brain and is suggested to be involved in Ca(2+)-dependent neurotransmitter release.

Synonyms:

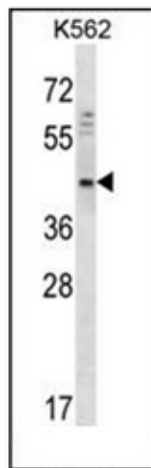
Doc2-alpha, Doc2

Note:

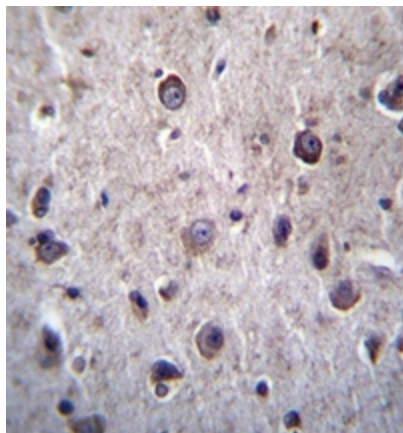
Molecular Weight: 43959 Da

Protein Families:

Secreted Protein

Product images:

Western blot analysis of DOC2A Antibody in K562 cell line lysates (35ug/lane). This demonstrates the DOC2A antibody detected the DOC2A protein (arrow).



Formalin fixed and paraffin embedded human brain tissue reacted with DOC2A Antibody followed by peroxidase conjugation of the secondary antibody and DAB staining.