

## Product datasheet for **AP51302PU-N**

### DNMT3A (Center) Rabbit Polyclonal Antibody

#### Product data:

Product Type:	Primary Antibodies
Applications:	WB
Recommended Dilution:	<b>ELISA:</b> 1/1000. <b>Western Blot:</b> 1/100-1/500.
Reactivity:	Human
Host:	Rabbit
Isotype:	Ig
Clonality:	Polyclonal
Immunogen:	KLH conjugated synthetic peptide selected from the Central region of Human DNMT3A
Specificity:	This antibody recognizes Human DNMT3A (Center).
Formulation:	PBS State: Aff - Purified State: Liquid purified Ig fraction Preservative: 0.09% Sodium Azide
Concentration:	lot specific
Purification:	Affinity Chromatography on Protein A
Conjugation:	Unconjugated
Storage:	Store undiluted at 2-8°C for one month or (in aliquots) at -20°C for longer. Avoid repeated freezing and thawing.
Stability:	Shelf life: one year from despatch.
Gene Name:	DNA (cytosine-5-)-methyltransferase 3 alpha
Database Link:	<a href="#">Entrez Gene 1788 Human Q9Y6K1</a>



[View online »](#)

**Background:** CpG methylation is an epigenetic modification that is important for embryonic development, imprinting, and X-chromosome inactivation. Studies in mice have demonstrated that DNA methylation is required for mammalian development. This gene encodes a DNA methyltransferase that is thought to function in de novo methylation, rather than maintenance methylation. The protein localizes to the cytoplasm and nucleus and its expression is developmentally regulated. Alternative splicing results in multiple transcript variants encoding different isoforms. [provided by RefSeq].

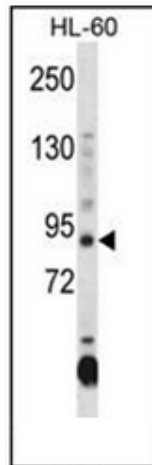
**Synonyms:** DNA MTase HsaIII A, M.HsaIII A

**Note:** **Molecular Weight:** 101858 Da

**Protein Families:** Druggable Genome

**Protein Pathways:** Cysteine and methionine metabolism, Metabolic pathways

**Product images:**



Western blot analysis of DNMT3A Antibody (Center) in HL-60 cell line lysates (35ug/lane). This demonstrates the DNMT3A antibody detected the DNMT3A protein (arrow).