

Product datasheet for **AP51299PU-N**

DNALI1 (C-term) Rabbit Polyclonal Antibody

Product data:

Product Type:	Primary Antibodies
Applications:	WB
Recommended Dilution:	ELISA: 1/1000. Western Blot: 1/100-1/500.
Reactivity:	Human
Host:	Rabbit
Isotype:	Ig
Clonality:	Polyclonal
Immunogen:	conjugated synthetic peptide between 214-243 amino acids from the C-terminal region of Human DNALI1.
Specificity:	This antibody recognizes Human DNALI1 (C-term).
Formulation:	PBS with 0.09% (W/V) Sodium Azide as preservative State: Aff - Purified State: Liquid purified Ig fraction
Concentration:	lot specific
Purification:	Affinity Chromatography on Protein A
Conjugation:	Unconjugated
Storage:	Store undiluted at 2-8°C for one month or (in aliquots) at -20°C for longer. Avoid repeated freezing and thawing.
Stability:	Shelf life: one year from despatch.
Gene Name:	dynein axonemal light intermediate chain 1
Database Link:	Entrez Gene 7802 Human O14645
Background:	This gene is the human homolog of the Chlamydomonas inner dynein arm gene, p28. The precise function of this gene is not known, however, it is a potential candidate for immotile cilia syndrome (ICS). Ultrastructural defects of the inner dynein arms are seen in patients with ICS. Immotile mutant strains of Chlamydomonas, a biflagellated algae, exhibit similar defects.
Synonyms:	HP28

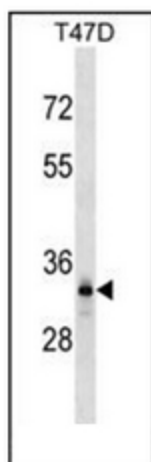


[View online »](#)

Note: **Molecular Weight:** 29662 Da

Protein Pathways: Huntington's disease

Product images:



Western blot analysis of DNALI1 Antibody (C-term) in T47D cell line lysates (35ug/lane). This demonstrates the DNALI1 antibody detected the DNALI1 protein (arrow).