

## Product datasheet for **AP51292PU-N**

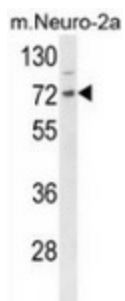
### **DNAJC2 (Center) Rabbit Polyclonal Antibody**

#### **Product data:**

Product Type:	Primary Antibodies
Applications:	WB
Recommended Dilution:	<b>Western blot:</b> 1/100-1/500. Enzyme immunoassay: 1/1000.
Reactivity:	Human, Mouse
Host:	Rabbit
Isotype:	Ig
Clonality:	Polyclonal
Immunogen:	Synthetic peptide - KLH conjugated - corresponding to the central region (between 233-263aa) of human ZRF1.
Specificity:	This antibody recognizes ZRF1.
Formulation:	PBS with 0.09% (W/V) Sodium azide State: Aff - Purified State: Liquid purified Ig fraction
Concentration:	lot specific
Purification:	Purified through a Protein A column followed by peptide affinity purification
Conjugation:	Unconjugated
Storage:	Store undiluted at 2-8°C for one month or (in aliquots) at -20°C for longer. Avoid repeated freezing and thawing.
Stability:	Shelf life: one year from despatch.
Gene Name:	DnaJ heat shock protein family (Hsp40) member C2
Database Link:	<a href="#">Entrez Gene 22791 Mouse</a> <a href="#">Entrez Gene 27000 Human Q99543</a>
Synonyms:	MPHOSPH11, MPP11, DNAJC2
Note:	<b>Molecular Weight:</b> 71897 Da



[View online »](#)

**Product images:**

Western blot analysis of DNAJC2 (arrow) in mouse Neuro-2a cell line lysates (35ug/lane) using ZRF1 antibody.