

Product datasheet for **AP51288PU-N**

DNAJB6 (Center) Rabbit Polyclonal Antibody

Product data:

Product Type:	Primary Antibodies
Applications:	FC, IHC, WB
Recommended Dilution:	Flow cytometry: 1/10-1/50. Immunohistochemistry on Paraffin sections: 1/10-1/50. Western blot: 1/100-1/500. Enzyme immunoassay: 1/1000.
Reactivity:	Human
Host:	Rabbit
Isotype:	Ig
Clonality:	Polyclonal
Immunogen:	Synthetic peptide - KLH conjugated - corresponding to the central region (between 217-247aa) of human DNAJB6
Specificity:	This antibody recognizes DNAJB6.
Formulation:	PBS with 0.09% (W/V) Sodium azide State: Aff - Purified State: Liquid purified Ig fraction
Concentration:	lot specific
Purification:	Purified through a Protein A column followed by peptide affinity purification
Conjugation:	Unconjugated
Storage:	Store undiluted at 2-8°C for one month or (in aliquots) at -20°C for longer. Avoid repeated freezing and thawing.
Stability:	Shelf life: one year from despatch.
Gene Name:	DnaJ heat shock protein family (Hsp40) member B6
Database Link:	Entrez Gene 10049 Human O75190



[View online »](#)

Background:

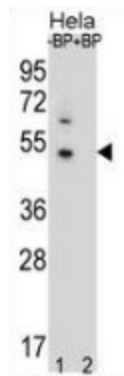
The DNAJB6 gene encodes a member of the DNAJ protein family. DNAJ family members are characterized by a highly conserved amino acid stretch called the 'J-domain' and function as one of the two major classes of molecular chaperones involved in a wide range of cellular events, such as protein folding and oligomeric protein complex assembly. This family member may also play a role in polyglutamine aggregation in specific neurons. Alternative splicing of this gene results in multiple transcript variants; however, not all variants have been fully described.

Synonyms:

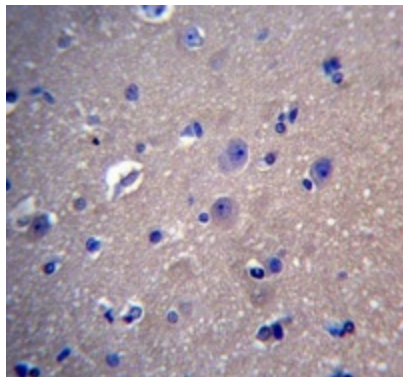
Heat shock protein J2, MSJ-1, HHDJ1, MRJ, HSJ2, MRJ, MSJ1

Note:

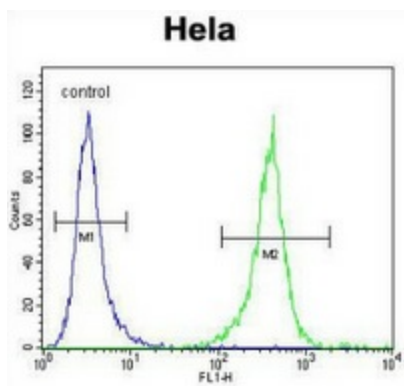
Molecular Weight: 36087 Da

Product images:


Western blot analysis of DNAJB6 (arrow) pre-incubated without (lane 1) and with (lane 2) blocking peptide in HeLa cell line lysate using DNAJB6 antibody. (1:60/250 dilution).



Immunohistochemistry analysis in human brain tissue (Formalin-fixed, Paraffin-embedded) using DNAJB6 antibody, followed by peroxidase conjugated secondary antibody and DAB staining. This data demonstrates the use of this antibody for IHC. Clinical relevance has not been evaluated.



Flow cytometric analysis of HeLa cells (right histogram) compared to a negative control cell (left histogram) using DNAJB6 antibody, followed by FITC-conjugated goat-anti-rabbit secondary antibodies.