

Product datasheet for **AP51283PU-N**

DNAH2 (N-term) Rabbit Polyclonal Antibody

Product data:

Product Type:	Primary Antibodies
Applications:	WB
Recommended Dilution:	ELISA: 1/1000. Western Blot: 1/1000.
Reactivity:	Human
Host:	Rabbit
Isotype:	Ig
Clonality:	Polyclonal
Immunogen:	KLH conjugated synthetic peptide between 440-468 amino acids from the N-terminal region of Human DNAH2
Specificity:	This antibody recognizes Human DNAH2 (N-term).
Formulation:	PBS State: Aff - Purified State: Liquid purified Ig fraction Preservative: 0.09% Sodium Azide
Concentration:	lot specific
Purification:	Affinity Chromatography on Protein A
Conjugation:	Unconjugated
Storage:	Store undiluted at 2-8°C for one month or (in aliquots) at -20°C for longer. Avoid repeated freezing and thawing.
Stability:	Shelf life: one year from despatch.
Gene Name:	dynein axonemal heavy chain 2
Database Link:	Entrez Gene 146754 Human Q9P225



[View online »](#)

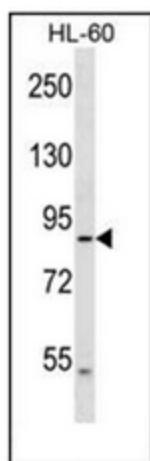
Background: Dyneins are microtubule-associated motor protein complexes composed of several heavy, light, and intermediate chains. The axonemal dyneins, found in cilia and flagella, are components of the outer and inner dynein arms attached to the peripheral microtubule doublets. DNAH2 is an axonemal inner arm dynein heavy chain (Chapelin et al., 1997 [PubMed 9256245]).

Synonyms: Dynein heavy chain 2, axonemal, DNAHC2, DNHD3, KIAA1503

Note: **Molecular Weight:** 100kd Isoform 3. 507698 Da

Protein Pathways: Huntington's disease

Product images:



Western blot analysis of DNAH2 Antibody (N-term) in HL-60 cell line lysates (35ug/lane). This demonstrates the DNAH2 antibody detected the DNAH2 protein (arrow).