

Product datasheet for **AP51281PU-N**

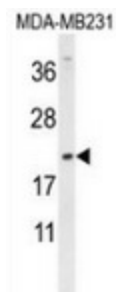
DMRTC1 (N-term) Rabbit Polyclonal Antibody

Product data:

Product Type:	Primary Antibodies
Applications:	WB
Recommended Dilution:	Western blot: 1/100-1/500. Enzyme immunoassay: 1/1000.
Reactivity:	Human
Host:	Rabbit
Isotype:	Ig
Clonality:	Polyclonal
Immunogen:	Synthetic peptide - KLH conjugated - corresponding to the N-terminal region (between 13-42aa) of human DMRTC1.
Specificity:	This antibody recognizes DMRTC1 at N-term.
Formulation:	PBS with 0.09% (W/V) Sodium azide State: Aff - Purified State: Liquid purified Ig fraction
Concentration:	lot specific
Purification:	Purified through a Protein A column followed by peptide affinity purification
Conjugation:	Unconjugated
Storage:	Store undiluted at 2-8°C for one month or (in aliquots) at -20°C for longer. Avoid repeated freezing and thawing.
Stability:	Shelf life: one year from despatch.
Gene Name:	DMRT like family C1
Database Link:	Entrez Gene 728656 Human Entrez Gene 63947 Human Q5HYR2
Synonyms:	Doublesex- and mab-3-related transcription factor C1
Note:	Molecular Weight: 20139 Da



[View online »](#)

Product images:

Western blot analysis in MDA-MB231 cell line lysates (35ug/lane) using DMRTC1 antibody. (N-term). This demonstrates this antibody detected the DMRTC1 protein (arrow).