

Product datasheet for **AP51278PU-N**

FAM20C (C-term) Rabbit Polyclonal Antibody

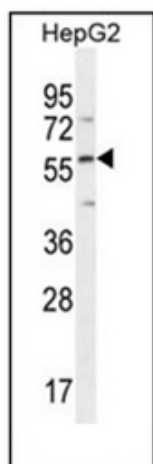
Product data:

Product Type:	Primary Antibodies
Applications:	IHC, WB
Recommended Dilution:	ELISA: 1/1000. Western Blot: 1/100-1/500. Immunohistochemistry on Paraffin Sections: 1/50-1/100.
Reactivity:	Human
Host:	Rabbit
Isotype:	Ig
Clonality:	Polyclonal
Immunogen:	KLH conjugated synthetic peptide between 443-471 amino acids from the C-terminal region of human Dentin matrix protein 4.
Specificity:	This antibody recognizes Human Dentin matrix protein 4 (C-term).
Formulation:	PBS State: Aff - Purified State: Liquid purified Ig fraction Preservative: 0.09% Sodium Azide
Concentration:	lot specific
Purification:	Affinity Chromatography on Protein A
Conjugation:	Unconjugated
Storage:	Store undiluted at 2-8°C for one month or (in aliquots) at -20°C for longer. Avoid repeated freezing and thawing.
Stability:	Shelf life: one year from despatch.
Gene Name:	family with sequence similarity 20 member C
Database Link:	Entrez Gene 56975 Human Q8IXL6
Background:	Calcium-binding protein which may play a role in dentin mineralization (By similarity).
Synonyms:	DMP-4, FAM20C, DMP4

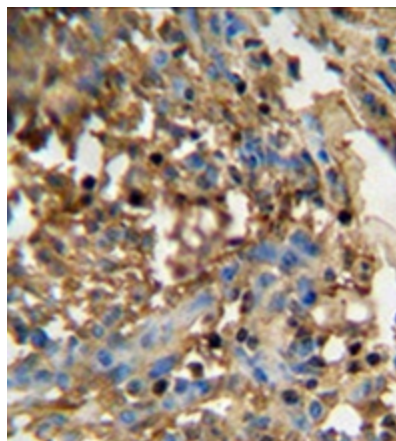


[View online »](#)

Note: **Molecular Weight:** 64446 Da
Protein Families: Secreted Protein, Transmembrane

Product images:

Western blot analysis of DMP4 Antibody (C-term) in HepG2 cell line lysates (35ug/lane). This demonstrates the DMP4 antibody detected the DMP4 protein (arrow).



Formalin fixed and paraffin embedded human breast carcinoma reacted WITH DMP4 Antibody (C-term) followed by peroxidase conjugation of the secondary antibody and DAB staining.