

Product datasheet for **AP51277PU-N**

DMC1 (N-term) Rabbit Polyclonal Antibody

Product data:

Product Type:	Primary Antibodies
Applications:	FC, IHC, WB
Recommended Dilution:	ELISA: 1/1000. Western Blot: 1/100-1/500. Flow Cytometry: 1/10-1/50. Immunohistochemistry on Paraffin Sections: 1/50-1/100.
Reactivity:	Human
Host:	Rabbit
Isotype:	Ig
Clonality:	Polyclonal
Immunogen:	KLH conjugated synthetic peptide between 1~30 amino acids from the N-terminal region of human DMC1
Specificity:	This antibody recognizes Human DMC1 / LIM15 (N-term).
Formulation:	PBS State: Aff - Purified State: Liquid purified Ig fraction Preservative: 0.09% Sodium Azide
Concentration:	lot specific
Purification:	Affinity Chromatography on Protein A
Conjugation:	Unconjugated
Storage:	Store undiluted at 2-8°C for one month or (in aliquots) at -20°C for longer. Avoid repeated freezing and thawing.
Stability:	Shelf life: one year from despatch.
Gene Name:	DNA meiotic recombinase 1
Database Link:	Entrez Gene 11144 Human Q14565



[View online »](#)

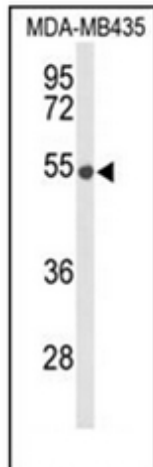
Background: DMC1 is essential for meiotic homologous recombination. Genetic recombination in meiosis plays an important role in generating diversity of genetic information. This protein is structurally and evolutionary related to the products of the yeast RAD51 and E. coli RecA genes.

Synonyms: DMC1H

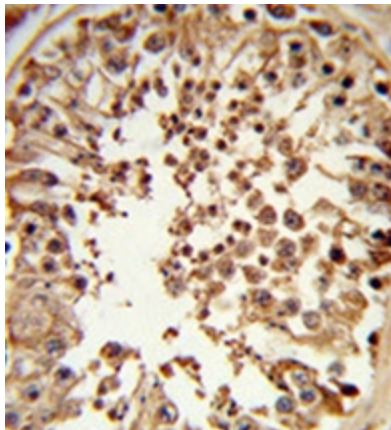
Note: **Molecular Weight:** 37681 Da

Protein Families: Druggable Genome

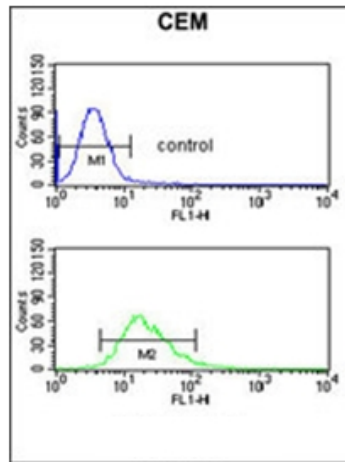
Product images:



Western blot analysis of DMC1 Antibody (N-term) in MDA-MB435 cell line lysates (35ug/lane). DMC1 (arrow) was detected using the purified Pab.



Formalin-fixed and paraffin-embedded human testis tissue reacted with DMC1 antibody (N-term), followed by peroxidase-conjugated secondary antibody and DAB staining.



Flow cytometric analysis of CEM cells using DMC1 antibody (N-term) (bottom histogram) compared to a negative control cell (top histogram). FITC-conjugated goat-anti-rabbit secondary antibodies were used for the analysis.