

Product datasheet for **AP51276PU-N**

DLX6 (Center) Rabbit Polyclonal Antibody

Product data:

Product Type:	Primary Antibodies
Applications:	WB
Recommended Dilution:	Western blot: 1/100-1/500. Enzyme immunoassay: 1/1000.
Reactivity:	Human
Host:	Rabbit
Isotype:	Ig
Clonality:	Polyclonal
Immunogen:	Synthetic peptide - KLH conjugated - corresponding to the central region (between 90-119aa) of human DLX6.
Specificity:	This antibody recognizes DLX6.
Formulation:	PBS with 0.09% (W/V) Sodium azide State: Aff - Purified State: Liquid purified Ig fraction
Concentration:	lot specific
Purification:	Purified through a Protein A column followed by peptide affinity purification
Conjugation:	Unconjugated
Storage:	Store undiluted at 2-8°C for one month or (in aliquots) at -20°C for longer. Avoid repeated freezing and thawing.
Stability:	Shelf life: one year from despatch.
Gene Name:	distal-less homeobox 6
Database Link:	Entrez Gene 1750 Human P56179



[View online »](#)

Background:

DLX genes are a highly conserved family of six different homeo box-containing genes that share homology with distal-less (Dll), a gene expressed in the head and limbs of the developing fruit fly. DLX genes are expressed in spatially and temporally restricted patterns in craniofacial primordia, basal telencephalon and diencephalon, and in distal regions of extending appendages, including the limb and the genital bud. The differential expression of DLX influences patterning, morphogenesis and histogenesis in these tissues. The DLX gene products can activate transcription and are localized primarily to the nucleus, although DLX5 can be found in the cytoplasm. DLX proteins influence different stages of proper tissue development, including patterning of the orofacial skeleton (craniofacial ectomesenchyme) and differentiation of structures within and between teeth.

Synonyms:

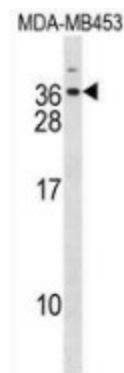
DLX-6, Homeobox protein DLX6

Note:

Molecular Weight: 19708 Da

Protein Families:

Transcription Factors

Product images:

Western blot analysis in MDA-MB453 cell line lysates (35ug/lane) using DLX6 antibody. This demonstrates the DLX6 antibody detected the DLX6 protein (arrow).