

Product datasheet for **AP51274PU-N**

DLL3 (C-term) Rabbit Polyclonal Antibody

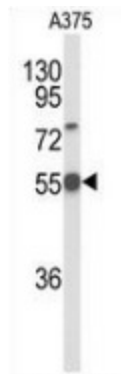
Product data:

Product Type:	Primary Antibodies
Applications:	IF, IHC, WB
Recommended Dilution:	Immunofluorescence: 1/10-1/50. Immunohistochemistry on Paraffin Sections: 1/50-1/100. Western blot: 1/2000. Enzyme immunoassay: 1/1000.
Reactivity:	Human
Host:	Rabbit
Isotype:	Ig
Clonality:	Polyclonal
Immunogen:	Synthetic peptide - KLH conjugated - corresponding to the C-terminal region (between 519-548 aa) of human DLL3.
Specificity:	This antibody recognizes DLL3 at C-term .
Formulation:	PBS with 0.09% (W/V) Sodium azide State: Aff - Purified State: Liquid purified Ig fraction
Concentration:	lot specific
Purification:	Purified through a Protein A column followed by peptide affinity purification
Storage:	Store undiluted at 2-8°C for one month or (in aliquots) at -20°C for longer. Avoid repeated freezing and thawing.
Stability:	Shelf life: one year from despatch.
Gene Name:	Homo sapiens delta like canonical Notch ligand 3 (DLL3), transcript variant 1
Database Link:	Entrez Gene 10683 Human

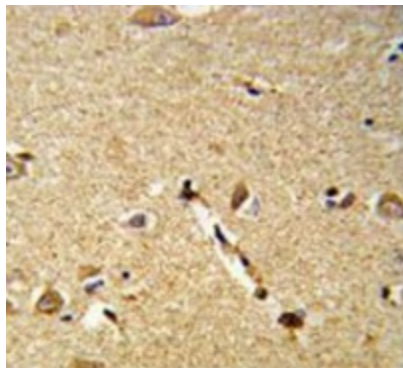


[View online »](#)

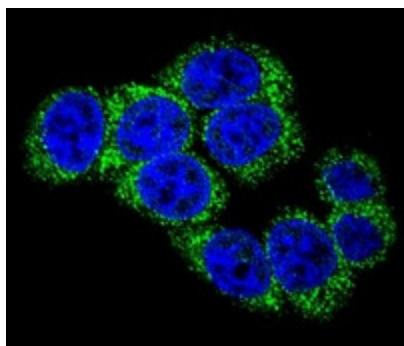
- Background:** Delta-like protein 3 is a ligand for the Notch signaling pathway. It inhibits primary neurogenesis. DLL3 plays a role in the formation of somite boundaries during segmentation of the paraxial mesoderm. Defects in DLL3 are the cause of Spondylocostal dysostosis autosomal recessive type 1 (SCDO1). Mutations in DLL3 gene cause truncal shortening relative to their limbs, which leads to abdominal protrusion, abnormal spinal curvature and sometimes a plagiocephaly-torticollis sequence. It may be required to divert neurons along a specific differentiation pathway.
- Synonyms:** Delta-like protein 3, Delta-3
- Note:** **Molecular Weight:** 64618 Da
- Protein Families:** Cancer stem cells, Druggable Genome, ES Cell Differentiation/IPS, Stem cell relevant signaling - DSL/Notch pathway, Transmembrane
- Protein Pathways:** Notch signaling pathway
- Product images:**



Western blot analysis of DLL3 (arrow) in A375 cell line lysates (35ug/lane) using DLL3 antibody.



Immunohistochemistry analysis of human brain tissue (Formalin-fixed, Paraffin-embedded) using DLL3 antibody. (C-term), followed by peroxidase-conjugated secondary antibody and DAB staining. This data demonstrates the use of this antibody for IHC. Clinical relevance has not been evaluated.



Confocal immunofluorescent analysis with 293 cell using DLL3 antibody. (C-term), followed by Alexa Fluor 488-conjugated goat anti-rabbit IgG (green). DAPI was used to stain the cell nuclear (blue).