

## Product datasheet for **AP51272PU-N**

### DLK (DLK1) Rabbit Polyclonal Antibody

#### Product data:

Product Type:	Primary Antibodies
Applications:	IHC, WB
Recommended Dilution:	<b>Immunohistochemistry on Paraffin Sections:</b> 1/50-1/100. <b>Western blot:</b> 1/1000. <b>Enzyme immunoassay:</b> 1/1000.
Reactivity:	Human
Host:	Rabbit
Isotype:	Ig
Clonality:	Polyclonal
Immunogen:	Recombinant protein of Human DLK
Specificity:	This antibody recognizes Human DLK1. Other species not tested.
Formulation:	PBS with 0.09% (W/V) Sodium Azide State: Aff - Purified State: Liquid purified Ig fraction
Concentration:	lot specific
Purification:	Purified through a Protein A column followed by peptide affinity purification
Conjugation:	Unconjugated
Storage:	Store undiluted at 2-8°C for one month or (in aliquots) at -20°C for longer. Avoid repeated freezing and thawing.
Stability:	Shelf life: one year from despatch.
Gene Name:	Homo sapiens delta-like 1 homolog (Drosophila) (DLK1), transcript variant 1
Database Link:	<a href="#">Entrez Gene 8788 Human P80370</a>



[View online »](#)

**Background:**

This gene encodes a transmembrane protein containing six epidermal growth factor repeats. The protein is involved in the differentiation of several cell types, including adipocytes; it is also thought to be a tumor suppressor. It is one of several imprinted genes located in a region of on chr 14q32. Certain mutations in this imprinted region can cause phenotypes similar to maternal and paternal uniparental disomy of chromosome 14 (UPD14). This gene is expressed from the paternal allele. A polymorphism within this gene has been associated with child and adolescent obesity. The mode of inheritance for this polymorphism is polar overdominance; this non-Mendelian inheritance pattern was first described in sheep with the callipyge phenotype, which is characterized by muscle hypertrophy and decreased fat mass.

**Synonyms:**

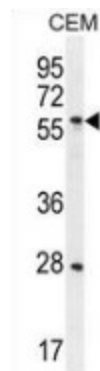
DLK-1, DLK, Protein delta homolog 1, pG2, PREF1, Preadipocyte factor 1

**Note:**

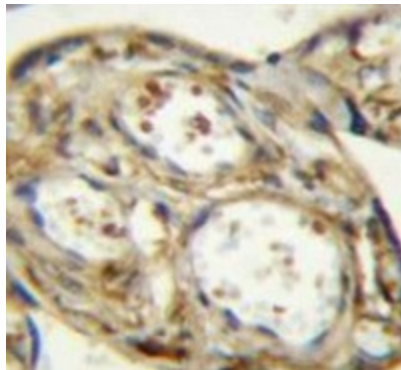
**Molecular Weight:** 41300 Da

**Protein Families:**

Druggable Genome, ES Cell Differentiation/IPS, Transmembrane

**Product images:**

Western blot analysis in CEM cell line lysates (35ug/lane) using DLK1 antibody. This demonstrates the DLK1 antibody detected the DLK1 protein (arrow).



Immunohistochemistry analysis in human placenta tissue (Formalin-fixed, Paraffin-embedded) using DLK1 antibody., followed by peroxidase conjugated secondary antibody and DAB staining. This data demonstrates the use of DLK1 antibody for IHC. Clinical relevance has not been evaluated.