

Product datasheet for **AP51269PU-N**

DKK1 (N-term) Rabbit Polyclonal Antibody

Product data:

Product Type:	Primary Antibodies
Applications:	WB
Recommended Dilution:	ELISA: 1/1000. Western Blot: 1/100-1/500.
Reactivity:	Human
Host:	Rabbit
Isotype:	Ig
Clonality:	Polyclonal
Immunogen:	KLH conjugated synthetic peptide between 64–93 amino acids from the N-terminal region of Human Dickkopf-1.
Specificity:	This antibody recognizes Human Dickkopf-1 (N-term).
Formulation:	PBS State: Aff - Purified State: Liquid purified Ig fraction Preservative: 0.09% Sodium Azide
Concentration:	lot specific
Purification:	Affinity Chromatography on Protein A
Conjugation:	Unconjugated
Storage:	Store undiluted at 2-8°C for one month or (in aliquots) at -20°C for longer. Avoid repeated freezing and thawing.
Stability:	Shelf life: one year from despatch.
Gene Name:	dickkopf WNT signaling pathway inhibitor 1
Database Link:	Entrez Gene 22943 Human O94907
Background:	DKK1 is a protein that is a member of the dickkopf family. It is a secreted protein with two cysteine rich regions and is involved in embryonic development through its inhibition of the WNT signaling pathway. Elevated levels of DKK1 in bone marrow plasma and peripheral blood is associated with the presence of osteolytic bone lesions in patients with multiple myeloma.



[View online »](#)

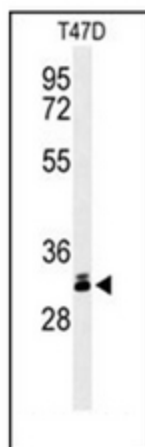
Synonyms: DKK1, DKK-1, Dickkopf-related protein 1, SK

Note: **Molecular Weight:** 28672 Da

Protein Families: Adult stem cells, Cancer stem cells, Druggable Genome, ES Cell Differentiation/IPS, Secreted Protein, Stem cell relevant signaling - Wnt Signaling pathway

Protein Pathways: Wnt signaling pathway

Product images:



Western blot analysis of Dickkopf-1 Antibody (N-term) in T47D cell line lysates (35ug/lane). DKK1 (arrow) was detected using the purified Pab.