

Product datasheet for **AP51267PU-N**

DISC1 (C-term) Rabbit Polyclonal Antibody

Product data:

Product Type:	Primary Antibodies
Applications:	FC, IHC, WB
Recommended Dilution:	ELISA: 1/1000. Western Blot: 1/100-1/500. Flow Cytometry: 1/10-1/50. Immunohistochemistry on Paraffin Sections: 1/50-1/100.
Reactivity:	Human
Host:	Rabbit
Isotype:	Ig
Clonality:	Polyclonal
Immunogen:	KLH conjugated synthetic peptide between 700-728 amino acids from the C-terminal region of Human DISC1.
Specificity:	This antibody recognizes Human DISC1 (C-term).
Formulation:	PBS State: Aff - Purified State: Liquid purified Ig fraction Preservative: 0.09% Sodium Azide
Concentration:	lot specific
Purification:	Affinity Chromatography on Protein A
Conjugation:	Unconjugated
Storage:	Store undiluted at 2-8°C for one month or (in aliquots) at -20°C for longer. Avoid repeated freezing and thawing.
Stability:	Shelf life: one year from despatch.
Gene Name:	disrupted in schizophrenia 1
Database Link:	Entrez Gene 27185 Human Q9NRI5



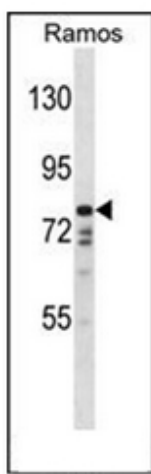
[View online »](#)

Background: This gene encodes a protein with multiple coiled coil motifs which is located in the nucleus, cytoplasm and mitochondria. The protein is involved in neurite outgrowth and cortical development through its interaction with other proteins. This gene is disrupted in a t(1;11) (q42.1;q14.3) translocation which segregates with schizophrenia and related psychiatric disorders in a large Scottish family. Alternate transcriptional splice variants, encoding different isoforms, have been characterized. [provided by RefSeq].

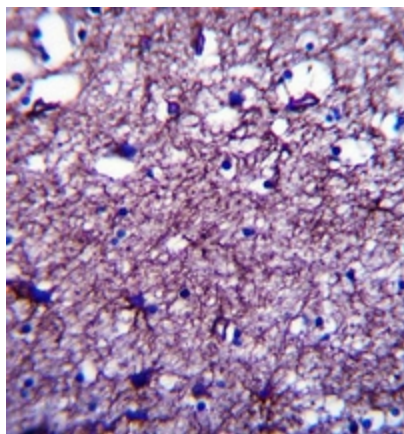
Synonyms: DISC-1, KIAA0457, Disrupted in schizophrenia 1 protein

Note: **Molecular Weight:** 93611 Da

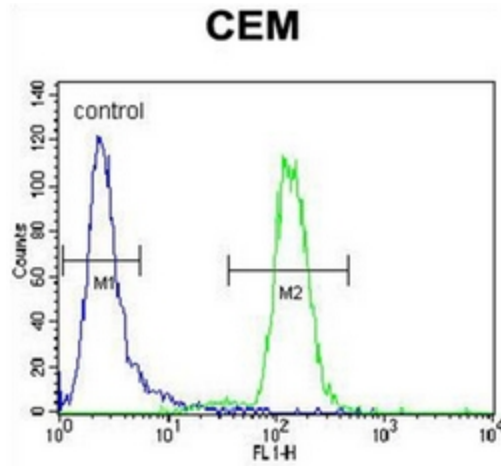
Product images:



Western blot analysis of DISC1 Antibody (C-term) in Ramos cell line lysates (35ug/lane). This demonstrates the DISC1 antibody detected the DISC1 protein (arrow).



Formalin fixed and paraffin embedded human brain tissue reacted with DISC1 Antibody (C-term) followed by peroxidase conjugation of the secondary antibody and DAB staining.



Flow cytometric analysis of CEM cells using DISC1 Antibody (C-term) (right histogram) compared to a negative control cell (left histogram). FITC-conjugated goat-anti-rabbit secondary antibodies were used for the analysis.