

## Product datasheet for **AP51266PU-N**

### DIS3 (Center) Rabbit Polyclonal Antibody

#### Product data:

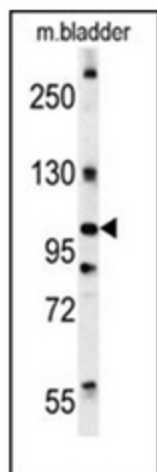
Product Type:	Primary Antibodies
Applications:	IHC, WB
Recommended Dilution:	<b>ELISA:</b> 1/1000. <b>Western Blot:</b> 1/100-1/500. <b>Immunohistochemistry on Paraffin Sections:</b> 1/50-1/100.
Reactivity:	Human, Mouse
Host:	Rabbit
Isotype:	Ig
Clonality:	Polyclonal
Immunogen:	KLH conjugated synthetic peptide between 302-331 amino acids from the Central region of human DIS3
Specificity:	This antibody recognizes Human and Mouse DIS3 (Center).
Formulation:	PBS State: Aff - Purified State: Liquid purified Ig fraction Preservative: 0.09% Sodium Azide
Concentration:	lot specific
Purification:	Affinity Chromatography on Protein A
Conjugation:	Unconjugated
Storage:	Store undiluted at 2-8°C for one month or (in aliquots) at -20°C for longer. Avoid repeated freezing and thawing.
Stability:	Shelf life: one year from despatch.
Gene Name:	DIS3 homolog, exosome endoribonuclease and 3'-5' exoribonuclease
Database Link:	<a href="#">Entrez Gene 72662 Mouse</a> <a href="#">Entrez Gene 22894 Human</a> <a href="#">Q9Y2L1</a>
Synonyms:	DIS3, KIAA1008, RRP44, Exosome complex exonuclease RRP44, Ribosomal RNA-processing protein 44, Protein DIS3 homolog
Note:	<b>Molecular Weight:</b> 109003 Da



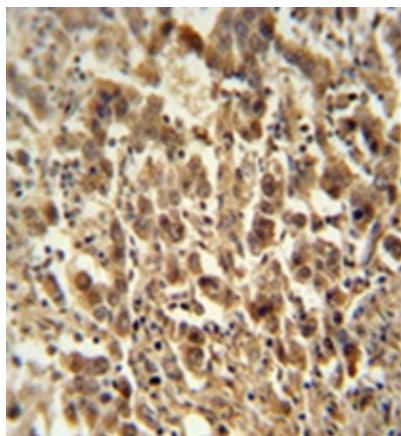
[View online »](#)

Protein Pathways: RNA degradation

### Product images:



Western blot analysis of DIS3 Antibody in mouse bladder tissue lysates (15ug/lane). This demonstrates the DIS3 antibody detected DIS3 protein (arrow).



Formalin fixed and paraffin embedded human testis carcinoma reacted with DIS3 Antibody followed by peroxidase conjugation of the secondary antibody and DAB staining.