

## Product datasheet for **AP51265PU-N**

### **DIRAS1 (Center) Rabbit Polyclonal Antibody**

#### **Product data:**

Product Type:	Primary Antibodies
Applications:	FC, IHC, WB
Recommended Dilution:	<b>ELISA:</b> 1/1000. <b>Western Blot:</b> 1/100-1/500. <b>Flow Cytometry:</b> 1/10-1/50. <b>Immunohistochemistry on Paraffin Sections:</b> 1/50-1/100.
Reactivity:	Human
Host:	Rabbit
Isotype:	Ig
Clonality:	Polyclonal
Immunogen:	KLH conjugated synthetic peptide between 115~145 amino acids from the Central region of human DIRAS1
Specificity:	This antibody recognizes Human DIRAS1 (Center).
Formulation:	PBS State: Aff - Purified State: Liquid purified Ig fraction Preservative: 0.09% Sodium Azide
Concentration:	lot specific
Purification:	Affinity Chromatography on Protein A
Conjugation:	Unconjugated
Storage:	Store undiluted at 2-8°C for one month or (in aliquots) at -20°C for longer. Avoid repeated freezing and thawing.
Stability:	Shelf life: one year from despatch.
Gene Name:	DIRAS family GTPase 1
Database Link:	<a href="#">Entrez Gene 148252 Human O95057</a>
Background:	DIRAS1 belongs to a distinct branch of the functionally diverse Ras (see HRAS; MIM 190020) superfamily of monomeric GTPases.

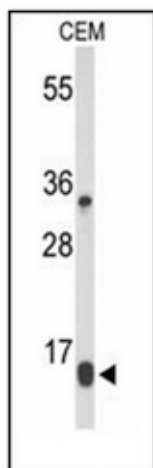


[View online »](#)

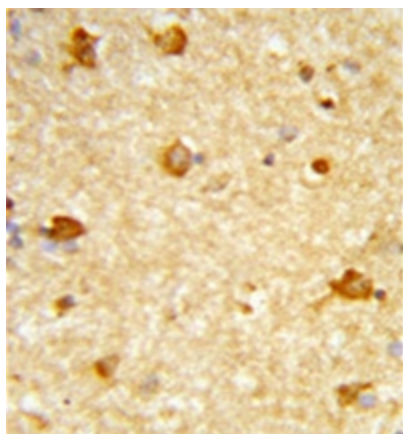
Synonyms: Di-Ras1, RIG, GBTS1

Note: **Molecular Weight:** 22329 Da

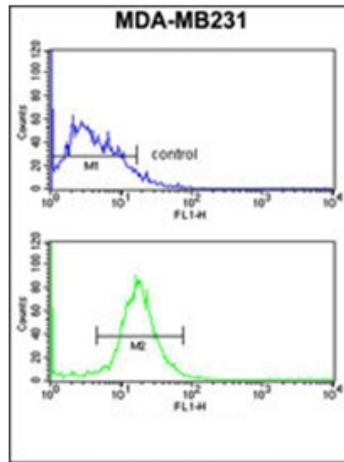
### Product images:



Western blot analysis of DIRAS1 Antibody in CEM cell line lysates (35ug/lane). DIRAS1 (arrow) was detected using the purified Pab.



Formalin-fixed and paraffin-embedded human brain tissue reacted with DIRAS1 Antibody, which was peroxidase-conjugated to the secondary antibody, followed by DAB staining.



Flow cytometry analysis of MDA-MB231 cells using DIRAS1 Antibody (bottom histogram) compared to a negative control cell (top histogram). FITC-conjugated goat-anti-rabbit secondary antibodies were used for the analysis.