

Product datasheet for **AP51261PU-N**

DIAPH3 (C-term) Rabbit Polyclonal Antibody

Product data:

Product Type:	Primary Antibodies
Applications:	WB
Recommended Dilution:	ELISA: 1/1000. Western Blot: 1/100-1/500.
Reactivity:	Human
Host:	Rabbit
Isotype:	Ig
Clonality:	Polyclonal
Immunogen:	KLH conjugated synthetic peptide between 1060-1090 amino acids from the C-terminal region of human DIAPH3.
Specificity:	This antibody recognizes Human DIAPH3 (C-term).
Formulation:	PBS State: Aff - Purified State: Liquid purified Ig fraction Preservative: 0.09% Sodium Azide
Concentration:	lot specific
Purification:	Affinity Chromatography on Protein A
Conjugation:	Unconjugated
Storage:	Store undiluted at 2-8°C for one month or (in aliquots) at -20°C for longer. Avoid repeated freezing and thawing.
Stability:	Shelf life: one year from despatch.
Gene Name:	diaphanous related formin 3
Database Link:	Entrez Gene 81624 Human Q9NSV4



[View online »](#)

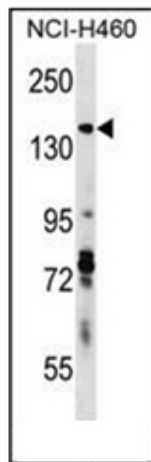
Background: DIAPH3 binds to GTP-bound form of Rho and to profilin. Acts in a Rho-dependent manner to recruit profilin to the membrane, where it promotes actin polymerization. It is required for cytokinesis, stress fiber formation, and transcriptional activation of the serum response factor. DFR proteins couple Rho and Src tyrosine kinase during signaling and the regulation of actin dynamics (By similarity).

Synonyms: DIAP3, Diaphanous homolog 3, Diaphanous-3, DRF3

Note: **Molecular Weight:** 136926 Da

Protein Pathways: Regulation of actin cytoskeleton

Product images:



Western blot analysis of DIAPH3 Antibody (C-term) in NCI-H460 cell line lysates (35ug/lane). This demonstrates the DIAPH3 antibody detected the DIAPH3 protein (arrow)