

## Product datasheet for **AP51256PU-N**

### **DHRS4L1 (C-term) Rabbit Polyclonal Antibody**

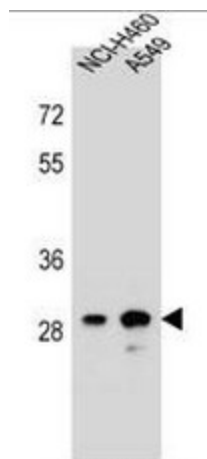
#### Product data:

Product Type:	Primary Antibodies
Applications:	WB
Recommended Dilution:	<b>ELISA:</b> 1/1000. <b>Western blot:</b> 1/100 - 1/500.
Reactivity:	Human
Host:	Rabbit
Isotype:	Ig
Clonality:	Polyclonal
Immunogen:	KLH conjugated synthetic peptide between 221-250 amino acids from the C-terminal region of human DHRS4L1
Specificity:	This antibody reacts to DHRS4L1.
Formulation:	PBS State: Aff - Purified State: Liquid purified Ig fraction Preservative: 0.09% (W/V) sodium azide
Concentration:	lot specific
Purification:	Affinity chromatography on Protein A
Conjugation:	Unconjugated
Storage:	Store undiluted at 2-8°C for one month or (in aliquots) at -20°C for longer. Avoid repeated freezing and thawing.
Stability:	Shelf life: one year from despatch.
Predicted Protein Size:	30608 Da
Gene Name:	dehydrogenase/reductase 4 like 1
Database Link:	<a href="#">Entrez Gene 728635 Human P0CG22</a>
Synonyms:	Putative dehydrogenase/reductase SDR family member 4-like 2
Protein Families:	Druggable Genome



[View online »](#)

## Product images:



DHRS4L1 Antibody (C-term) western blot analysis in NCI-H460, A549 cell line lysates (35ug/lane). This demonstrates the DHRS4L1 antibody detected the DHRS4L1 protein (arrow).