

Product datasheet for **AP51250PU-N**

LOC102724770 (Center) Rabbit Polyclonal Antibody

Product data:

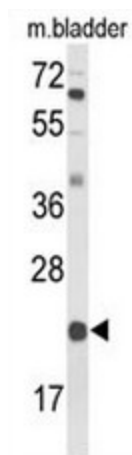
Product Type:	Primary Antibodies
Applications:	WB
Recommended Dilution:	ELISA: 1/1000. Western blot: 1/100 - 1/500.
Reactivity:	Human, Mouse
Host:	Rabbit
Isotype:	Ig
Clonality:	Polyclonal
Immunogen:	This antibody reacts to DGCR6.
Specificity:	This antibody reacts to DGCR6.
Formulation:	PBS State: Aff - Purified State: Liquid purified Ig fraction Preservative: 0.09% (W/V) sodium azide
Concentration:	lot specific
Purification:	Affinity chromatography on Protein A
Conjugation:	Unconjugated
Storage:	Store undiluted at 2-8°C for one month or (in aliquots) at -20°C for longer. Avoid repeated freezing and thawing.
Stability:	Shelf life: one year from despatch.
Predicted Protein Size:	24989 Da
Gene Name:	protein DGCR6
Database Link:	Entrez Gene 8214 Human Entrez Gene 102724770 Human Q14129
Background:	DGCR6 may play a role in neural crest cell migration into the third and fourth pharyngeal pouches.
Synonyms:	DiGeorge syndrome critical region 6



[View online »](#)

Protein Families: Druggable Genome, ES Cell Differentiation/IPS

Product images:



Western blot analysis of DGCR6 Antibody (Center) in mouse bladder tissue lysates (35ug/lane). DGCR6 (arrow) was detected using the purified Pab.