

Product datasheet for **AP51249PU-N**

DGCR2 (Center) Rabbit Polyclonal Antibody

Product data:

Product Type:	Primary Antibodies
Applications:	WB
Recommended Dilution:	ELISA: 1/1000. Western blot: 1/100 - 1/500.
Reactivity:	Human, Mouse
Host:	Rabbit
Isotype:	Ig
Clonality:	Polyclonal
Immunogen:	KLH conjugated synthetic peptide between 272~301 amino acids from the Central region of human DGCR2
Specificity:	This antibody reacts to DGCR2.
Formulation:	PBS State: Aff - Purified State: Liquid purified Ig fraction Preservative: 0.09% (W/V) sodium azide
Concentration:	lot specific
Purification:	Affinity chromatography on Protein A
Conjugation:	Unconjugated
Storage:	Store undiluted at 2-8°C for one month or (in aliquots) at -20°C for longer. Avoid repeated freezing and thawing.
Stability:	Shelf life: one year from despatch.
Predicted Protein Size:	60811 Da
Gene Name:	DiGeorge syndrome critical region gene 2
Database Link:	Entrez Gene 13356 Mouse Entrez Gene 9993 Human P98153
Background:	DGCR2 encodes a novel putative adhesion receptor protein, which could play a role in neural crest cells migration, a process which has been proposed to be altered in DiGeorge syndrome.

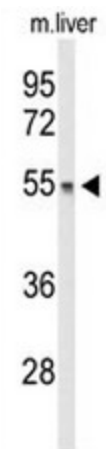


[View online »](#)

Synonyms: IDD, KIAA0163

Protein Families: Druggable Genome, Transmembrane

Product images:



Western blot analysis of DGCR2 Antibody (Center) in mouse liver tissue lysates (35ug/lane). DGCR2 (arrow) was detected using the purified Pab.