

## Product datasheet for **AP51246PU-N**

### DFNB31 (WHRN) (Center) Rabbit Polyclonal Antibody

#### Product data:

Product Type:	Primary Antibodies
Applications:	IHC, WB
Recommended Dilution:	<b>ELISA:</b> 1/1000. <b>Western Blot:</b> 1/100-1/500. <b>Immunohistochemistry on Paraffin Sections:</b> 1/10-1/50.
Reactivity:	Human
Host:	Rabbit
Isotype:	Ig
Clonality:	Polyclonal
Immunogen:	KLH conjugated synthetic peptide between 385-413 amino acids from the Central region of Human Whirlin.
Specificity:	This antibody recognizes Human Whirlin (Center).
Formulation:	PBS State: Aff - Purified State: Liquid purified Ig fraction Preservative: 0.09% Sodium Azide
Concentration:	lot specific
Purification:	Affinity Chromatography on Protein A
Conjugation:	Unconjugated
Storage:	Store undiluted at 2-8°C for one month or (in aliquots) at -20°C for longer. Avoid repeated freezing and thawing.
Stability:	Shelf life: one year from despatch.
Gene Name:	whirlin
Database Link:	<a href="#">Entrez Gene 25861 Human</a> <a href="#">Q9P202</a>



[View online »](#)

**Background:**

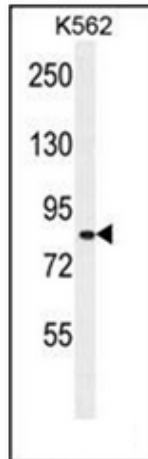
This gene is thought to function in the organization and stabilization of stereocilia elongation and actin cytoskeletal assembly, based on studies of the related mouse gene. Mutations in this gene have been associated with autosomal recessive non-syndromic deafness and Usher Syndrome. Alternative splicing of this gene results in multiple transcript variants encoding different isoforms.

**Synonyms:**

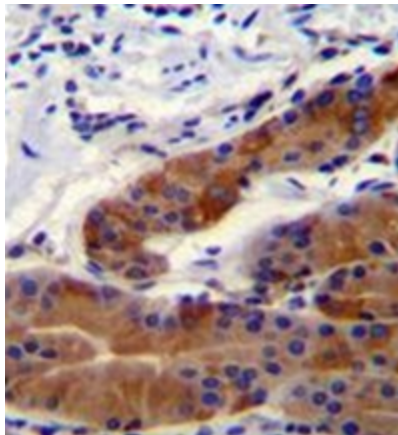
WHRN, DFNB31, KIAA1526

**Note:**

**Molecular Weight:** 96586 Da

**Product images:**

Western blot analysis of Whirlin Antibody in K562 cell line lysates (35ug/lane).



Formalin fixed and paraffin embedded stomach tissue reacted with Whirlin Antibody followed by peroxidase conjugation of the secondary antibody and DAB staining.