

Product datasheet for **AP51243PU-N**

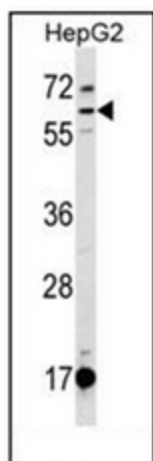
DEPDC1B (C-term) Rabbit Polyclonal Antibody

Product data:

Product Type:	Primary Antibodies
Applications:	WB
Recommended Dilution:	ELISA: 1/1000. Western Blot: 1/100-1/500.
Reactivity:	Human
Host:	Rabbit
Isotype:	Ig
Clonality:	Polyclonal
Immunogen:	KLH conjugated synthetic peptide between 461-491 amino acids from the C-terminal region of Human DEPDC1B.
Specificity:	This antibody recognizes Human DEPDC1B (C-term).
Formulation:	PBS State: Aff - Purified State: Liquid purified Ig fraction Preservative: 0.09% Sodium Azide
Concentration:	lot specific
Purification:	Affinity Chromatography on Protein A
Conjugation:	Unconjugated
Storage:	Store undiluted at 2-8°C for one month or (in aliquots) at -20°C for longer. Avoid repeated freezing and thawing.
Stability:	Shelf life: one year from despatch.
Gene Name:	DEP domain containing 1B
Database Link:	Entrez Gene 55789 Human Q8WUY9
Background:	GTPase activator activity. biological process: intracellular signaling cascade.
Synonyms:	XTP8
Note:	Molecular Weight: 61771 Da



[View online »](#)

Product images:

Western blot analysis of DEPDC1B Antibody (C-term) in HepG2 cell line lysates (35ug/lane). This demonstrates the DEPDC1B antibody detected the DEPDC1B protein (arrow).