

## Product datasheet for **AP51242PU-N**

### DEPDC5 (C-term) Rabbit Polyclonal Antibody

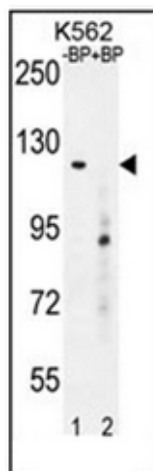
#### Product data:

|                         |   |
|-------------------------|---|
| Product Type:           | Primary Antibodies  |
| Applications:           | WB  |
| Recommended Dilution:   | <b>ELISA:</b> 1/1000.<br><b>Western Blot:</b> 1/100-1/500.  |
| Reactivity:             | Human   |
| Host:                   | Rabbit  |
| Isotype:                | Ig  |
| Clonality:              | Polyclonal  |
| Immunogen:              | KLH conjugated synthetic peptide between 1411-1440 amino acids from the C-terminal region of Human DEPDC5                         |
| Specificity:            | Recognizes DEPDC5 (C-term).   |
| Formulation:            | PBS<br>State: Aff - Purified<br>State: Liquid purified Ig fraction<br>Preservative: 0.09% (W/V) Sodium Azide                      |
| Concentration:          | lot specific  |
| Purification:           | Affinity Chromatography on Protein A  |
| Conjugation:            | Unconjugated  |
| Storage:                | Store the antibody undiluted at 2-8°C for one month or (in aliquots) at -20°C for longer.<br>Avoid repeated freezing and thawing. |
| Stability:              | Shelf life: one year from despatch.   |
| Predicted Protein Size: | 177910 Da   |
| Gene Name:              | DEP domain containing 5   |
| Database Link:          | <a href="#">Entrez Gene 9681 Human</a><br><a href="#">O75140</a>  |
| Synonyms:               | DEPDC5, DEP domain-containing protein 5, KIAA0645   |



[View online »](#)

## Product images:



Western blot analysis of DEPDC5 Antibody (C-term) Cat.-No AP51242PU-N pre-incubated without (lane 1) and with (lane 2) blocking peptide in K562 cell line lysate. DEPDC5 Antibody (C-term) (arrow) was detected using the purified Pab (1:60/250 dilution).