

Product datasheet for **AP51238PU-N**

DENND5A (Center) Rabbit Polyclonal Antibody

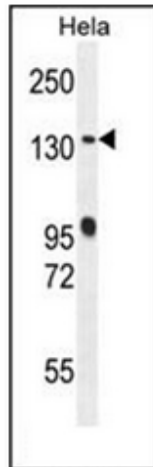
Product data:

Product Type:	Primary Antibodies
Applications:	FC, WB
Recommended Dilution:	ELISA: 1/1000. Western Blot: 1/100-1/500. Flow Cytometry: 1/0-1/50.
Reactivity:	Human
Host:	Rabbit
Isotype:	Ig
Clonality:	Polyclonal
Immunogen:	KLH conjugated synthetic peptide between 702-732 amino acids from the Central region of human DEN5A
Specificity:	This antibody recognizes Human DENND5A (Center).
Formulation:	PBS State: Aff - Purified State: Liquid purified Ig fraction Preservative: 0.09% Sodium Azide
Concentration:	lot specific
Purification:	Affinity Chromatography on Protein A
Conjugation:	Unconjugated
Storage:	Store undiluted at 2-8°C for one month or (in aliquots) at -20°C for longer. Avoid repeated freezing and thawing.
Stability:	Shelf life: one year from despatch.
Gene Name:	DENN domain containing 5A
Database Link:	Entrez Gene 23258 Human Q6IQ26
Synonyms:	Rab6-interacting protein 1, KIAA1091
Note:	Molecular Weight: 147095 Da

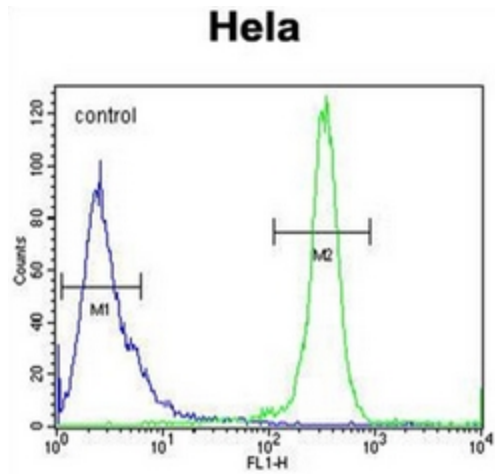


[View online »](#)

Product images:



Western blot analysis of RAB6IP1 / DENND5A Antibody (Center) in HeLa cell line lysates (35ug/lane). This demonstrates the DEN5A antibody detected the DEN5A protein (arrow).



Flow cytometric analysis of HeLa cells using RAB6IP1 / DENND5A Antibody (Center) (right histogram) compared to a negative control cell (left histogram). FITC-conjugated goat-anti-rabbit secondary antibodies were used for the analysis.