

## Product datasheet for **AP51236PU-N**

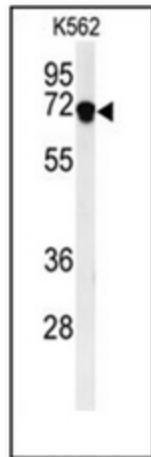
### **DENND1A (C-term) Rabbit Polyclonal Antibody**

#### **Product data:**

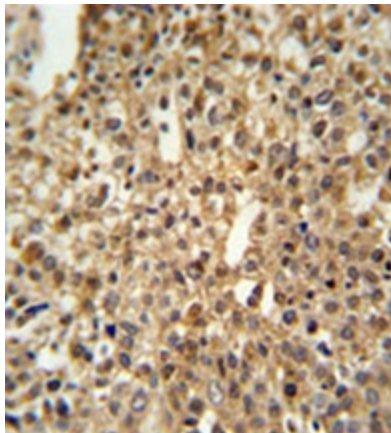
Product Type:	Primary Antibodies
Applications:	FC, IHC, WB
Recommended Dilution:	<b>Peptide ELISA:</b> 1/1000. <b>Western Blot:</b> 1/1000. <b>Flow Cytometry:</b> 1/10-1/50. <b>Immunohistochemistry on Paraffin Sections:</b> 1/50-1/100.
Reactivity:	Human
Host:	Rabbit
Isotype:	Ig
Clonality:	Polyclonal
Immunogen:	KLH conjugated synthetic peptide between 576-605 amino acids from the C-terminal region of Human DEN1A.
Specificity:	This antibody recognizes Human DENND1A (C-term).
Formulation:	PBS State: Aff - Purified State: Liquid purified Ig fraction Preservative: 0.09% Sodium Azide
Concentration:	lot specific
Purification:	Affinity Chromatography on Protein A
Conjugation:	Unconjugated
Storage:	Store undiluted at 2-8°C for one month or (in aliquots) at -20°C for longer. Avoid repeated freezing and thawing.
Stability:	Shelf life: one year from despatch.
Gene Name:	DENN domain containing 1A
Database Link:	<a href="#">Entrez Gene 57706 Human Q8TEH3</a>
Synonyms:	FAM31A, KIAA1608, Connecdenn
Note:	<b>Molecular Weight:</b> 110577 Da



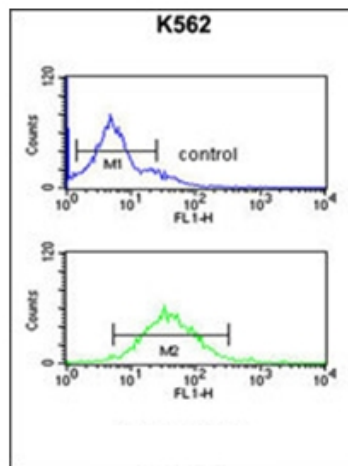
[View online »](#)

**Product images:**


Western blot analysis of DENND1A Antibody (C-term) in K562 cell line lysates (35ug/lane). DEN1A (arrow) was detected using the purified Pab.



Formalin fixed and paraffin embedded human cervix carcinoma reacted with DENND1A Antibody (C-term) followed by peroxidase conjugation of the secondary antibody and DAB staining.



Flow cytometric analysis of K562 cells using DENND1A Antibody (C-term) (bottom histogram) compared to a negative control cell (top histogram). FITC-conjugated goat-anti-rabbit secondary antibodies were used for the analysis.