

## Product datasheet for **AP51235PU-N**

### DEM1 (EXO5) (Center) Rabbit Polyclonal Antibody

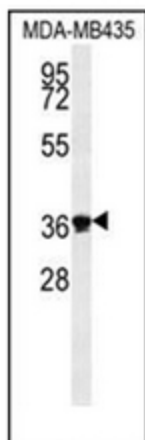
#### Product data:

Product Type:	Primary Antibodies
Applications:	FC, WB
Recommended Dilution:	<b>Western Blot:</b> 1/1000. <b>Flow Cytometry:</b> 1/10-1/50.
Reactivity:	Hamster, Human, Mouse
Host:	Rabbit
Isotype:	Ig
Clonality:	Polyclonal
Immunogen:	KLH conjugated synthetic peptide between 166-193 amino acids from the Central region of human DEM1
Specificity:	This antibody recognizes Human, Mouse and Hamster DEM1 (Center).
Formulation:	PBS State: Aff - Purified State: Liquid purified Ig fraction Preservative: 0.09% Sodium Azide
Concentration:	lot specific
Purification:	Affinity Chromatography on Protein A
Conjugation:	Unconjugated
Storage:	Store undiluted at 2-8°C for one month or (in aliquots) at -20°C for longer. Avoid repeated freezing and thawing.
Stability:	Shelf life: one year from despatch.
Gene Name:	exonuclease 5
Database Link:	<a href="#">Entrez Gene 73172 Mouse</a> <a href="#">Entrez Gene 64789 Human</a> <a href="#">Q9H790</a>
Synonyms:	EXO5, C1orf176, DEM1, Defects in morphology protein 1 homolog
Note:	<b>Molecular Weight:</b> 41816 Da

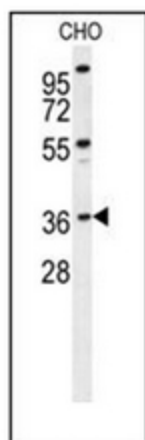


[View online »](#)

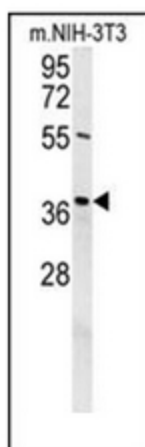
## Product images:



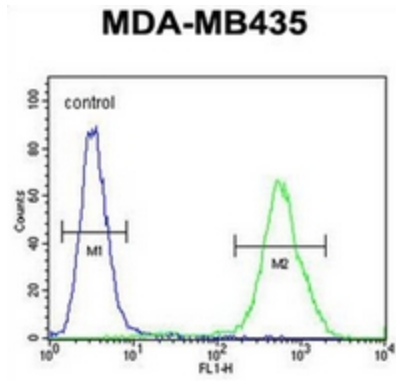
Western blot analysis of DEM1 Antibody (Center) in MDA-MB435 cell line lysates (35ug/lane). This demonstrates the DEM1 antibody detected the DEM1 protein (arrow).



Western blot analysis of DEM1 Antibody (Center) in CHO cell line lysates (35ug/lane). This demonstrates the DEM1 antibody detected the DEM1 protein (arrow).



Western blot analysis of DEM1 Antibody (Center) in mouse NIH-3T3 cell line lysates (35ug/lane). This demonstrates the DEM1 antibody detected the DEM1 protein (arrow).



Flow cytometric analysis of MDA-MB435 cells using DEM1 Antibody (Center) (right histogram) compared to a negative control cell (left histogram). FITC-conjugated goat-anti-rabbit secondary antibodies were used for the analysis.