

## Product datasheet for **AP51233PU-N**

### DEGS2 (C-term) Rabbit Polyclonal Antibody

#### Product data:

Product Type:	Primary Antibodies
Applications:	IHC, WB
Recommended Dilution:	<b>ELISA:</b> 1/1000. <b>Western Blot:</b> 1/100-1/500. <b>Immunohistochemistry on Paraffin Sections:</b> 1/50-1/100.
Reactivity:	Human
Host:	Rabbit
Isotype:	Ig
Clonality:	Polyclonal
Immunogen:	KLH conjugated synthetic peptide between 268-298 amino acids from the C-terminal region of human DEGS2
Specificity:	This antibody recognizes Human DEGS2 (C-term).
Formulation:	PBS State: Aff - Purified State: Liquid purified Ig fraction Preservative: 0.09% Sodium Azide
Concentration:	lot specific
Purification:	Affinity Chromatography on Protein A
Conjugation:	Unconjugated
Storage:	Store undiluted at 2-8°C for one month or (in aliquots) at -20°C for longer. Avoid repeated freezing and thawing.
Stability:	Shelf life: one year from despatch.
Gene Name:	delta(4)-desaturase, sphingolipid 2
Database Link:	<a href="#">Entrez Gene 123099 Human</a> <a href="#">Q6QHC5</a>



[View online »](#)

**Background:** DEGS2 encodes a bifunctional enzyme that is involved in the biosynthesis of phytosphingolipids in human skin and in other phytosphingolipid-containing tissues. This enzyme can act as a sphingolipid delta(4)-desaturase, and also as a sphingolipid C4-hydroxylase.

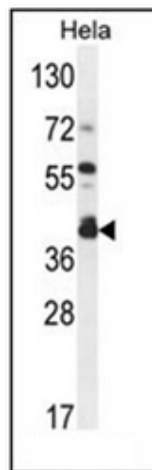
**Synonyms:** Degenerative spermatocyte homolog 2, C14orf66, DES2

**Note:** **Molecular Weight:** 37197 Da

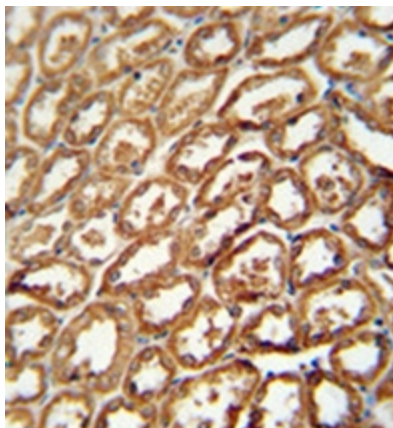
**Protein Families:** Transmembrane

**Protein Pathways:** Metabolic pathways, Sphingolipid metabolism

### Product images:



Western blot analysis of DEGS2 Antibody (C-term) in HeLa cell line lysates (35ug/lane). This demonstrates the DEGS2 antibody detected the DEGS2 protein (arrow).



Formalin fixed and paraffin embedded human kidney tissue reacted with DEGS2 Antibody (C-term) followed by peroxidase conjugation of the secondary antibody and DAB staining.