

Product datasheet for **AP51230PU-N**

DEF6 (C-term) Rabbit Polyclonal Antibody

Product data:

Product Type:	Primary Antibodies
Applications:	WB
Recommended Dilution:	ELISA: 1/1000. Western Blot: 1/100-1/500.
Reactivity:	Human
Host:	Rabbit
Isotype:	Ig
Clonality:	Polyclonal
Immunogen:	KLH conjugated synthetic peptide between 499-528 amino acids from the C-terminal region of human DEF6
Specificity:	This antibody recognizes Human DEF6 (C-term).
Formulation:	PBS State: Aff - Purified State: Liquid purified Ig fraction Preservative: 0.09% Sodium Azide
Concentration:	lot specific
Purification:	Affinity Chromatography on Protein A
Conjugation:	Unconjugated
Storage:	Store undiluted at 2-8°C for one month or (in aliquots) at -20°C for longer. Avoid repeated freezing and thawing.
Stability:	Shelf life: one year from despatch.
Gene Name:	DEF6, guanine nucleotide exchange factor
Database Link:	Entrez Gene 50619 Human Q9H4E7
Background:	DEF6, or IBP, is a guanine nucleotide exchange factor (GEF) for RAC (MIM 602048) and CDC42 (MIM 116952) that is highly expressed in B and T cells (Gupta et al., 2003 [PubMed 12923183]).
Synonyms:	IBP, DEF-6, IRF4-binding protein, SLAT, SWAP70L

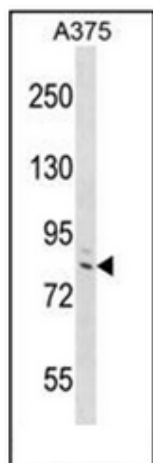


[View online »](#)

Note: **Molecular Weight:** 73910 Da

Protein Families: Druggable Genome

Product images:



western blot analysis of DEF6 Antibody (C-term) in A375 cell line lysates (35ug/lane). This demonstrates the DEF6 antibody detected the DEF6 protein (arrow).