

Product datasheet for **AP51229PU-N**

UTP25 (N-term) Rabbit Polyclonal Antibody

Product data:

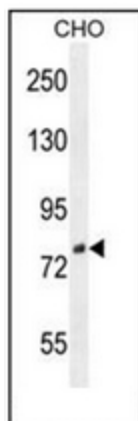
Product Type:	Primary Antibodies
Applications:	IF, IHC, WB
Recommended Dilution:	ELISA: 1/1000. Western Blot: 1/100-1/500. Immunofluorescence: 1/10-1/50. Immunohistochemistry on Paraffin Sections: 1/10-1/50.
Reactivity:	Hamster, Human, Mouse
Host:	Rabbit
Isotype:	Ig
Clonality:	Polyclonal
Immunogen:	KLH conjugated synthetic peptide between 9-38 amino acids from the N-terminal region of human DEF
Specificity:	This antibody recognizes Human, Mouse, and Hamster DEF (N-term)
Formulation:	PBS State: Aff - Purified State: Liquid purified Ig fraction Preservative: 0.09% Sodium Azide
Concentration:	lot specific
Purification:	Affinity Chromatography on Protein A
Conjugation:	Unconjugated
Storage:	Store undiluted at 2-8°C for one month or (in aliquots) at -20°C for longer. Avoid repeated freezing and thawing.
Stability:	Shelf life: one year from despatch.
Gene Name:	digestive organ expansion factor homolog (zebrafish)
Database Link:	Entrez Gene 27042 Human Q68CQ4
Background:	Regulates the p53 pathway to control the expansion growth of digestive organs (By similarity).
Synonyms:	Digestive organ expansion factor homolog,C1orf107



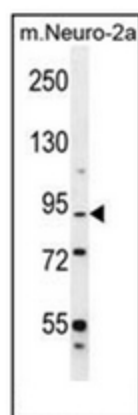
[View online »](#)

Note: **Molecular Weight:** 87055 Da

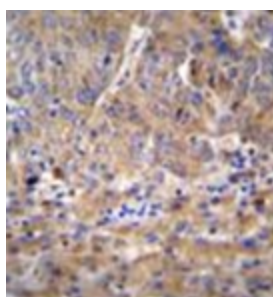
Product images:



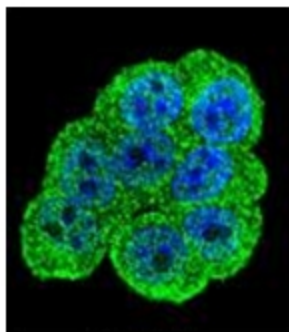
Western blot analysis of DEF Antibody (N-term) in CHO cell line lysates (35ug/lane). This demonstrates the DEF antibody detected the DEF protein (arrow).



Western blot analysis of DEF Antibody (N-term) in mouse Neuro-2a cell line lysates (35ug/lane). This demonstrates the DEF antibody detected the DEF protein (arrow).



Formalin fixed and paraffin embedded human hepatocarcinoma reacted with DEF Antibody (N-term) followed by peroxidase conjugation of the secondary antibody and DAB staining



Confocal immunofluorescent analysis of DEF Antibody (N-term) with HeLa cell followed by Alexa Fluor 488-conjugated goat anti-rabbit IgG (green). DAPI was used to stain the cell nuclear (blue).